

ProMax® POWER-VENT WATER HEATER

The ProMax® Power-Vent 40 and 50-gallon residential gas water heaters are equipped with A. O. Smith's patented C3 Technology® design, and meet Phase II of the ANSI Z21.10.1 standards for flammable vapor ignition resistance. In addition A. O. Smith has engineered other enhancements into its power-vent design, for easier installation and maximum venting flexibility. A power-vent water heater provides an alternative to conventional vertical-vent models, which require the use of a metal vent. They provide a solution to potential venting problems in replacement applications and offer versatile options for placement of gas water heaters in residential new construction.

VERSATILE POWER-VENT DESIGN

- 40 and 50-gallon models vent using 2", 3" or 4" Schedule 40 PVC, CPVC or ABS pipe. Canadian installations require ULC S636 approved PVC or CPVC pipe for venting.
- System versatility allows combined horizontal and vertical vent runs up to 120 equivalent feet with 3" pipe, up to 160 equivalent feet with 4" pipe on 40,000 BTU and 50,000 BTU models
- All models supplied with termination elbow and screens. See page 2 for complete information on vent distances and supplied elbows and screens for all models.

INTELLI-VENT™* GAS CONTROL

- Equipped with a nearly indestructible silicon nitride hot surface ignitor – no standing pilot
- Advanced electronics for more precise control of water temperature and easy to understand system diagnostics
- Side-mounted gas connection simplifies installation

EXCLUSIVE POWER-VENT BLOWER

- Specifically designed and manufactured by A. O. Smith Electrical Products
- Equipped with 110/120 volt electrical system, rating 3 amps or less
- 6-foot cord with standard 3-prong male connector

DYNACLEAN™ DIFFUSER DIP TUBE

- Reduces harmful lime and sediment buildup; maintains efficiency and maximizes tank life
- Made from long-lasting PEX cross-linked polymer

EXCLUSIVE COREGARD™ ANODE ROD

- Aluminum anode with stainless steel core protects tank against corrosion

GREEN CHOICE® GAS BURNER

- Patented "Eco-Friendly" design reduces NOx emissions up to 33% and meets requirements for less than 40 ng/j for low NOx emissions

DURABLE TAMPER-RESISTANT BRASS DRAIN VALVE

PERMAGLAS® GLASS TANK COATING

- Patented glass lining protects tank interior

CSA CERTIFIED AND ASME RATED T&P RELIEF VALVE

LISTED BY UNDERWRITERS LABORATORIES

- Listed according to ANSI Z21.10.1 or 10.3 - CSA 4.1 or 4.3 standards governing storage-type water heaters.
- Additional code compliance: UBC, CEC, SBCC, CABO, HUD, BOCA National heaters codes, Current Edition ASHRAE/IESNA 90.1 and 2004 NAECA

EQUIPPED WITH C3 TECHNOLOGY– See other side

6-YEAR LIMITED TANK & PARTS WARRANTY

- For complete information, consult written warranty

* Intelli-Vent™ is a registered trademark of Emerson Electric Company



ProMax®

POWER-VENT WATER HEATER

MODEL NUMBER	FIRST HOUR RATING GALLONS	ENERGY FACTOR	GALLON CAPACITY	BTU INPUT PER HOUR NATURAL	RECOVERY 90°F RISE GALLONS PER HOUR	R VALUE**	DIMENSIONS IN INCHES						APPROX. SHIPPING WEIGHT (LBS)	
							A	B	C	D	E	F		VENT OPTIONS
GPVH-40	69	.65	40	40,000	44	8	63	55	18-1/2	13	8	49	2, 3 or 4	157
GPVH-50	83	.65	50	40,000	44	8	65	56-3/4	20	13	8	50-1/4	2, 3 or 4	177
GPVR-40	70	.67	40	40,000	44	16	63	55	20-1/2	13	8	49	2, 3 or 4	166
GPVR-50	83	.67	50	40,000	44	16	65	56-3/4	22	13	8	50-1/4	2, 3 or 4	186
GPVT-40	80	.65	40	50,000	53	16	63	55	20-1/2	13	8	49	2, 3 or 4	166
GPVT-50	83	.65	50	50,000	53	16	65	56-3/4	22	13	8	50-1/4	2, 3 or 4	186
GPVX-50	114	.65	50	62,500	66	16	65	56-3/4	22	13	8	50-1/4	3 or 4	186
GPS-75*	N/A	N/A	74	80,000	86	12	66	57	25-1/2	15	16	50-1/4	3 or 4	245

Propane Inputs: GPVH-40, GPVH-50, GPVR-40, GPVR-50: 40,000 BTU, GPVT-40, GPVT-50: 50,000 BTU, GPVX-50: 55,000 BTU, GPS-75: 80,000 BTU

*74-gallon model is not FVIR construction

**R8=1", R12=1-1/2" and R16=2" foam capacity

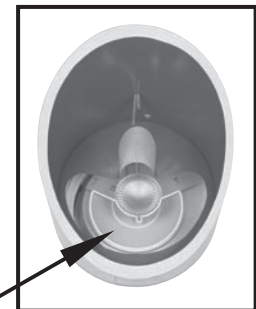
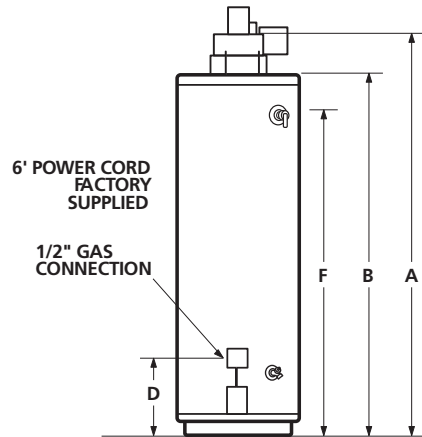
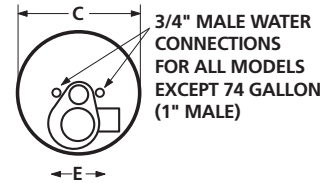
MODEL NUMBER	BTU INPUT	MAXIMUM VENT DISTANCE (Total Equivalent Feet)		
		2" Pipe	3" Pipe	4" Pipe
GPVH-40	40,000	40'	120'	160'
GPVH-50	40,000	40'	120'	160'
GPVR-40	40,000	40'	120'	160'
GPVR-50	40,000	40'	120'	160'
GPVT-40	50,000	40'	120'	160'
GPVT-50	50,000	40'	120'	160'
GPVX-50	62,500	N/A	80'	120'
GPS-75	80,000	N/A	30'	100'

40 and 50-gallon models are supplied with 2", 22-1/2° Termination Elbow, plus 2", 3" and 4" Screens (GPVX-50 Models do not include 2" screens).

74-gallon model is supplied with 3", 90° Termination Elbow, plus 3" Screen.

2" & 3" elbows are equal to 5' of vent pipe. 4" elbows are equal to 8' of vent pipe.

Important: Read and follow requirements shown in the Product Manual for ProMax Power-Vent gas water heaters dealing with type, placement and length of vent pipe and vent termination, as well as clearances required to provide adequate combustion and proper ventilation.



If flammable vapors accidentally enter the combustion chamber, the Corderite flame arrestor is designed so flames burn off the top surface and cannot escape down through the arrestor.



Flammable Vapor Ignition Resistant C3 Technology® Water Heaters

Corderite Combustion Containment (C3) design meets American National Standards Institute standards

(ANSI Z21.10.1 or 10.3 - CSA 4.1 or 4.3) that deal with the accidental or unintended ignition of flammable vapors, such as those emitted by gasoline.

Covered by four U.S. patents, C3 Technology gas water heaters feature a sealed combustion chamber with air intake screen and a fireproof Corderite flame arrestor built into the water heater base. ProMax® Power-Vent water heaters are also equipped with a flammable vapor sensor, which automatically shuts down the blower, Intelli-Vent™ gas control and hot surface ignitor if the presence of flammable vapors is detected.