

# A. O. SMITH

## WATER PRODUCTS COMPANY

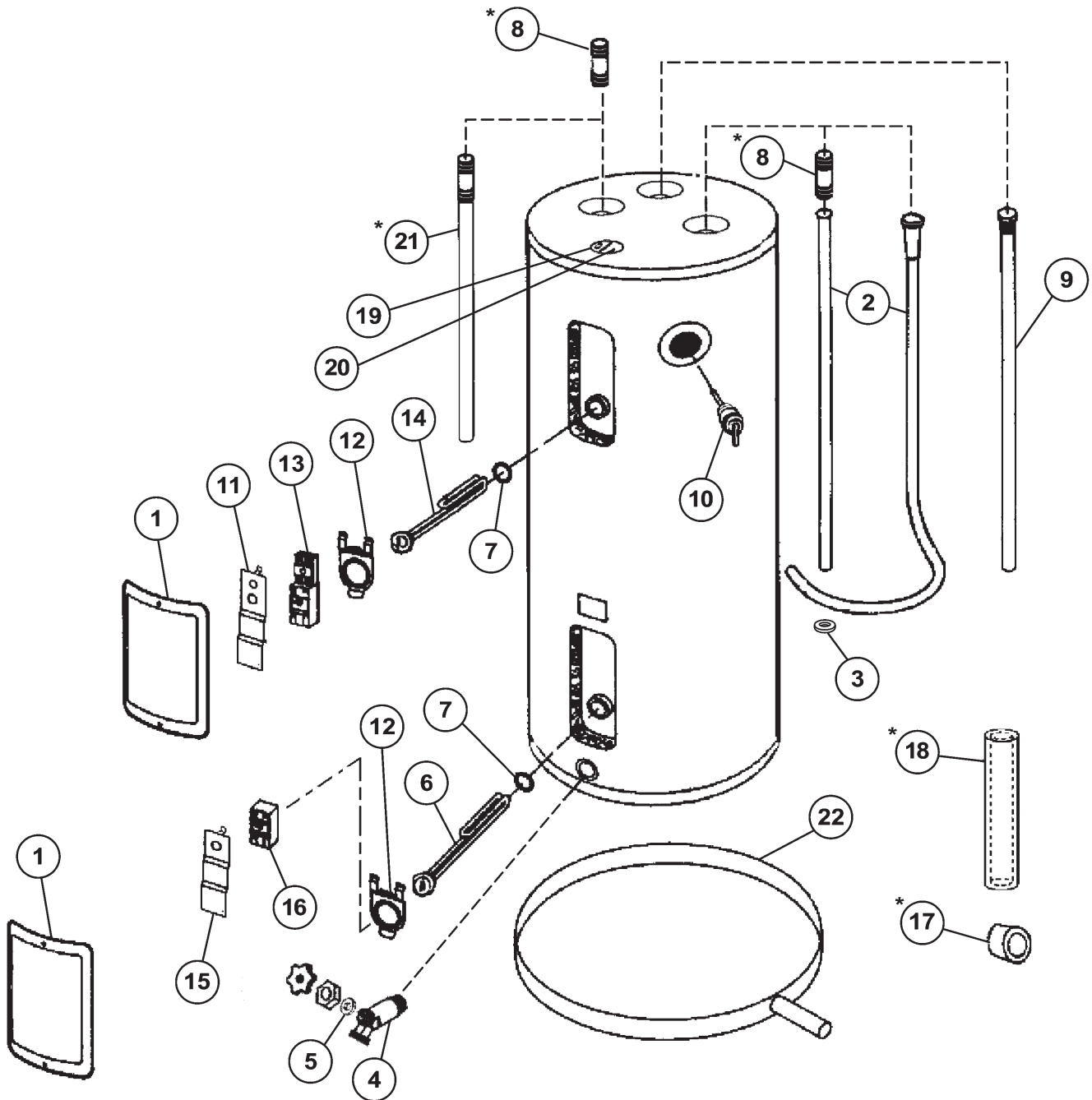
# ELECTRIC

RESIDENTIAL WATER HEATER PARTS LIST

MODELS: ECRT 40, 52, 66, 80

ECRS 50

PROMAX WITH  
HIGH EFFICIENCY



**A.O. SMITH WATER PRODUCTS CO., INC.**

500 Lindahl Parkway, Ashland City, TN 37015

Phone: 800-821-2017 • Fax: 800-644-9306

www.hotwater.com • email: parts@hotwater.com

Item Description	ECRT 40	ECRT52	ECRT66	ECRT80	ECRS50
1 .. Access Panel .....	181260-000	181260-000	181260-000	181260-000	181260-000
2 .. Dip Tube .....	183900-052	183900-046	183900-052	183900-052	183900-040
3 .. Dip Tube Seal .....	184011-000	184011-000	184011-000	184011-000	184011-000
4 .. Drain Valve .....	026273-004	026273-004	026273-004	026273-004	026273-004
5 .. Drain Valve Washer (17/32" x 13/64" x 1/8" Thick)**	N/A	N/A	N/A	N/A	N/A
6 .. Lower Element .....	042285-025	042285-025	042285-025	042285-025	042285-025
7 .. Element Gasket .....	0005300370	0005300370	0005300370	0005300370	0005300370
8 .. Nipple w/Heat Traps *	184633-001	184715-001	184633-002	184715-001	184633-001
9 .. Primary Anode Rod .....	183523-029	183523-026	183523-033	183523-033	183523-026
10 ... T&P Relief Valve .....	043151-004	043151-004	043151-004	043151-004	043151-004
11 ... Terminal Cover w/High Limit .....	182117-001	182117-001	182360-000	182360-000	182360-000
12 ... Thermostat Bracket .....	184608-000	184608-000	184608-000	184608-000	184608-000
13 ... Upper Thermostat w/High Limit .....	182354-000	182354-000	182354-000	182354-000	182354-000
14 ... Upper Element .....	042286-021	042286-021	042286-021	042286-021	042286-021
15 ... Terminal Cover .....	182360-000	182360-000	182117-001	182117-001	182117-001
16 ... Lower Thermostat .....	182359-000	182359-000	182359-000	182359-000	182359-000
17 ... T&P Insulation *	183256-000	183256-000	183256-000	183256-000	183256-000
18 ... Pipe Insulation *	181639-003	181639-003	181639-003	181639-003	181639-003
19 ... Junction Box Bracket w/CDT Hole .....	184659-000	184659-000	184659-000	184659-000	184659-000
20 ... Junction Box Cover .....	184660-000	184660-000	184660-000	184660-000	184660-000
21 ... Secondary Anode Outlet w/Heat Trap *	N/A	N/A	N/A	N/A	N/A
22 ... 20" Dia. Plastic Drain Pan w/Side Drain*	9002842	9002842	9002842	9002842	9002842
22" Dia. Plastic Drain Pan w/Side Drain*	9002843	9002843	9002843	9002843	9002843
24" Dia. Plastic Drain Pan w/Side Drain*	9002844	9002844	9002844	9002844	9002844
26" Dia. Plastic Drain Pan w/Side Drain*	9002845	9002845	9002845	9002845	9002845
23 ... Instruction Manual **	184639-000	184639-000	184639-000	184639-000	184639-000

\* If Applicable.

\*\* Not Illustrated

\*\*\* Available at most hardware stores

**A. O. SMITH**  
**WATER PRODUCTS**  
**COMPANY**

5621 W. 115TH STREET • ALSIP, ILLINOIS 60803  
Phone: 1-800-433-2545 • Fax: 1-800-433-2515  
www.hotwater.com • e-mail: parts@hotwater.com