

# A.O. SMITH

PSD-3-142/B

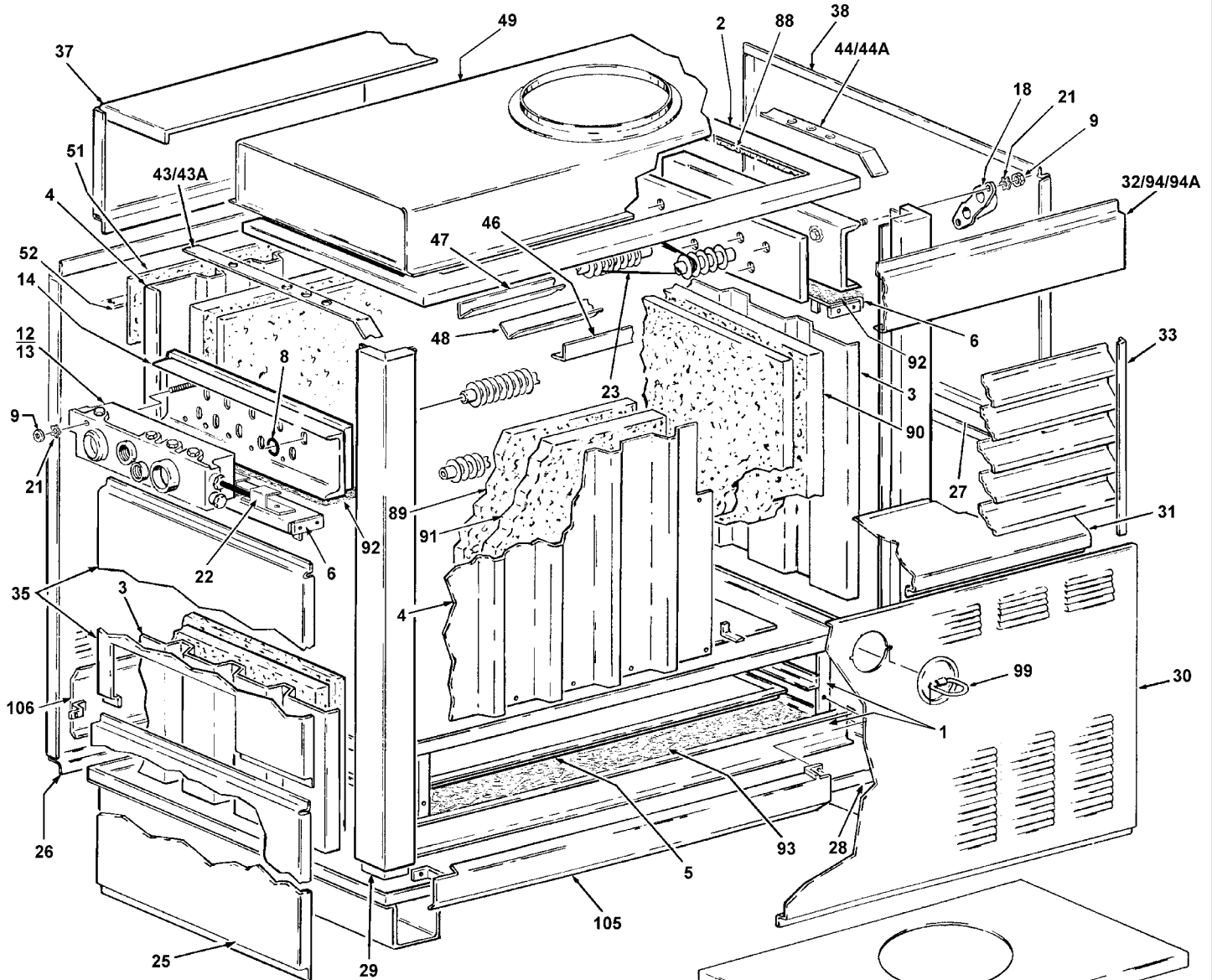
# GAS

## WATER PRODUCTS COMPANY

### COMMERCIAL WATER HEATERS REPLACEMENT PARTS LIST

**DURA-MAX MODELS  
DB/DW-720 THRU 1810:  
SERIES 110 THRU 118**

**PART ONE:** Models DB/DW-720 THRU 1350 See pages 1-4  
**PART TWO:** Models DB/DW-1480 THRU 1810 See pages 5-8

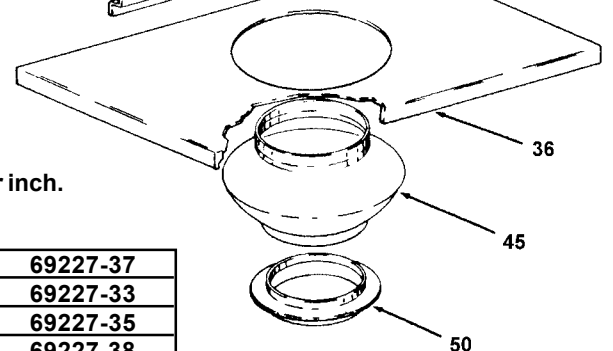


**INTEGRAL FIN TUBES:**

- DB/DW-720, 840, 960 Requires 6 Top Tubes/6 Bottom Tubes
  - DB/DW-1080 Thru DB/DW-1350 Requires 8 Top Tubes/8 Bottom Tubes
- NOTE: Top Tubes contain 7 fins per inch, Bottom Tubes contain 5 fins per inch.

**Item # 88: 1/8" DURAMAX INSULATION PAD:**

DB/DW-720	28 Ft.	69227-28	DB/DW-1350	37 Ft.	69227-37
DB/DW-840	30.5 Ft.	69227-31	DB/DW-1480	33 Ft.	69227-33
DB/DW-960	33 Ft.	69227-33	DB/DW-1610	35 Ft.	69227-35
DB/DW-1080	32 Ft.	69227-32	DB/DW-1810	37.5 Ft.	69227-38
DB/DW-1210	34.5 Ft.	69227-35			



**A.O. SMITH WATER PRODUCTS CO., INC.**

5621 W. 115TH STREET • ALSIP, ILLINOIS 60803

PHONE: 1-800-433-2545 • FAX: 1-800-433-2515

Website: WWW.HOTWATER.COM • EMAIL: PARTS@HOTWATER.COM

**SINGLE STAGE OPTION SHOWN:**

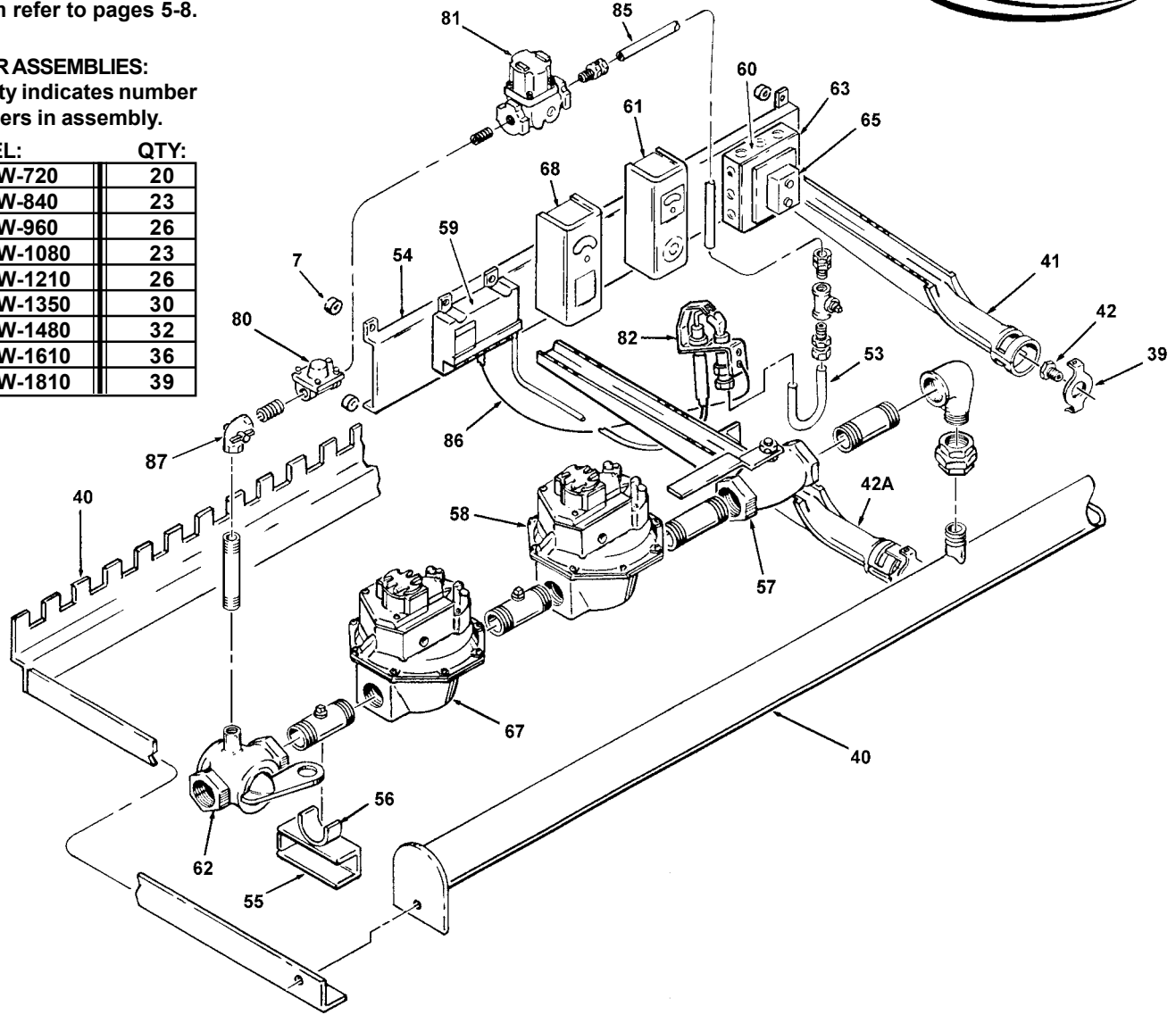
- Models DB/DW 720 thru 1350 refer to *Part One* illustrations & numbering system refer to pages 1-4.
- For SINGLE STAGE Models DB/DW 1480 thru 1810 refer to *Part Two* illustrations & numbering system refer to pages 5-8.



**BURNER ASSEMBLIES:**

\*Quantity indicates number of burners in assembly.

MODEL:	QTY:
DB/DW-720	20
DB/DW-840	23
DB/DW-960	26
DB/DW-1080	23
DB/DW-1210	26
DB/DW-1350	30
DB/DW-1480	32
DB/DW-1610	36
DB/DW-1810	39



**PART 1: Models DB/DW-720 THRU 1350**

Part numbers underlined are recommended stock items.

ITEM	DESCRIPTION	DM-720	DM-840	DM-960	DM-1080	DM-1210	DM-1350
<b>CHASSIS</b>							
1	CHASSIS BASE FRAME ASS'Y	200193	200236	200166	200195	200408	200232
2	CHASSIS TOP FRAME RAIL ASS'Y	200620	200620-1	200620-2	200620-3	200620-4	200722
3	CORRUGATED CHASSIS END PANELS	200186	200186	200186	200493	200493	200493
4	CORRUGATED CHASSIS SIDE PANELS	200185	200185-1	200185-2	200185-3	200185-4	200185-5
5	DRIP TRAY	200150	200150-1	200150-2	200621	200170-1	200621-1
6	HEAT EXCHANGER CHASSIS SUPPORT	200622	200622	200622	200622-1	200622-1	200622-1
7	INSULATOR	32779-1	32779-1	32779-1	32779-1	32779-1	32779-1
<b>HEAT EXCHANGER</b>							
8	"O" RING SEALS	<u>200133</u>	<u>200133</u>	<u>200133</u>	<u>200133</u>	<u>200133</u>	<u>200133</u>
9	3/8-16 HEX NUT	20099-1	20099-1	20099-1	20099-1	20099-1	20099-1
12	INLET/OUTLET MANIFOLD						
	STANDARD UNITS	200691-1	200691-1	200691-1	200692-1	200692-1	200692-1
13	INLET/OUTLET MANIFOLD						
	MODULATING OR UNITS WITH GUAGES	200691	200691	200691	200692	200692	200692
14	HEAT EXCHANGER	SEE COMPLETE HEAT EXCHANGER TABLE ON PAGE 8					
18	RETURN BENDS	200699-1	200699-1	200699-1	200699-1	200699-1	200699-1
21	SHAKE PROOF WASHER	200366	200366	200366	200366	200366	200366
22	HEAT EXCHANGER SUPPORT	200582	200582	200582	200583	200583	200583
23	HEAT EXCHANGER SUPPORT WIRE (8 PCS.)	NA	NA	NA	NA	NA	200587-21

ITEM	DESCRIPTION	DM-720	DM-840	DM-960	DM-1080	DM-1210	DM-1350
<b>CABINET</b>							
25	BOTTOM LEFT SIDE CABINET PANEL .....	200151	200151	200151	200174	200174	200174
26	BOTTOM REAR COVER PANEL .....	200153	200234	200155	200177	200391	200221
27	BOTTOM RIGHT SIDE CABINET PANEL .....	200157	200157	200157	200176	200176	200176
28	CABINET BASE ASS'Y .....	200167	200167-1	200167-2	200197	200197-1	200197-2
29	CORNER POSTS .....	200158-2	200158-2	200158-2	200158-3	200158-3	200158-3
30	FRONT ACCESS PANEL .....	200152	200235	200154	200172	200390	200219
31	FRONT INCLINE PANEL .....	200156	200156-1	200156-2	200328	200328-1	200328-2
32	FRONT TOP PANEL .....	200321	200321-1	200321-2	200321-3	200321-4	200321-5
33	LOUVER ASS'Y - FRONT .....	200295	200295-1	200295-2	200339	200339-1	200339-2
34	LOUVER ASS'Y - REAR .....				200344	200344-1	200344-2
35	TOP LEFT SIDE CABINET PANEL .....	200159	200159	200159	200173	200173	200173
36	TOP PANEL ASS'Y .....	200623	200623-1	200623-2	200623-3	200623-4	200623-5
37	TOP REAR CABINET PANEL .....	200300	200300-1	200300-2	200351	200351-1	200351-2
38	TOP RIGHT SIDE CABINET PANEL .....	200161	200161	200161	200175	200175	200175
<b>BURNER TRAY</b>							
39	BURNER CLIPS .....	98044	98044	98044	98044	98044	98044
40	BURNER TRAY ASS'Y .....	200449	200287	200422	200523	200523-1	200523-2
41	BURNERS STAINLESS STEEL .....	200559	200559	200559	69509	69509	192322-1
42	ORIFICES (SEA LEVEL) .....	29366-35	29366-35	29366-34	29366-31	29366-31	29366-31
42A	BURNER WITH PILOT BRACKET ASS'Y .....	200560	200560	200560	69510-2	69510-2	192323-1
<b>FLUE COLLECTOR AND DRAFT HOOD</b>							
43	DRAFT COVER LEFT SIDE (W/PROBE HOLES) .....	200526	200526	200526	200526-1	200526-1	200526-1
43A	DRAFT COVER LEFT SIDE (W/O PROBE HOLES) .....	200131	200131	200131	210113	210113	210113
44	DRAFT COVER RIGHT SIDE (W/O PROBE HOLES) .....	200292	200292	200292	200292-1	200292-1	200292-1
44A	DRAFT COVER RIGHT SIDE (W/PROBE HOLES) .....	210112	210112	210112	210107	210107	210107
45	DRAFT HOOD .....	200291	200291-1	200291-2	200291-3	200291-4	200291-5
46	END FLUE BAFFLE - FRONT .....	200514	200514-1	200514-2	200515	200515-1	200515-2
47	END FLUE BAFFLE - REAR .....	200439	200439-1	200439-2	200440	200440-1	200440-2
48	FLUE BAFFLES .....	200438	200438-1	200438-2	200438-1	200438-2	200438-3
49	FLUE COLLECTOR ASSEMBLY .....	200381	200381-1	200381-2	200381-3	200381-4	200381-5
50	FLUE RISER ASSEMBLY .....	200382	200382-1	200382-1	200206-2	200206-3	200206-3
51	REAR DRAFT BLANKET .....	200298	200298-1	200298-2	200298-1	200298-2	200298-3
52	REAR DRAFT RETAINING STRIP .....	200299	200299-1	200299-2	200299-1	200299-2	200299-3
<b>GAS CONTROL</b>							
53	PILOT TUBE .....	99528-1	99528-1	99528-1	99528-1	99528-1	99528-1
54	CONTROL MOUNTING PANEL .....	200367	200367	200367	200367	200367	200367
55	CONTROL STRING SUPPORT .....	200365	200365	200365	200365	200365	200365
56	CONTROL STRING SUPPORT CLIP .....	200389	200389	200389	200389	200389-1	200389-1
57	FIRING VALVE .....	69009-2	69009-2	69009-2	69009-2	69010-2	69010-2
59	IGNITION MODULE .....	191182-2	191182-2	191182-2	191182-2	191182-2	191182-2
60	JUNCTION BOX .....	93558	93558	93558	93558	93558	93558
62	MANUAL VALVE .....	3423-1	3423-1	3423-1	3423-1	96479-3	96479-3
63	THERMAL BALANCER .....	98190	98190	98190	98190	98190	98190
65	TRANSFORMER .....	69170-10	69170-10	69170-10	69170-10	69170-10	69170-10
66	WIRING HARNESS .....	200530	200530	200530	200530	200530	200530
<b>SINGLE STAGE</b>							
58	REDUNDANT GAS VALVE .....	78482-1	78482-1	78482-1	78482-1	78482-2	78482-2
67	GAS VALVE .....	69388	69388	69388	69388	69387	69387
68	CONTROL COMBINATION HIGH LIMIT .....	192403	192403	192403	192403	192403	192403
68A	THERMOWELL .....	95545-1	95545-1	95545-1	95545-1	95545-1	95545-1
<b>DUAL STAGE (NOT SHOWN)</b>							
58	REDUNDANT GAS VALVE .....	78482-1	78482-1	78482-1	78482-1	78482-2	78482-2
61	MANUAL RESET HIGH LIMIT .....	200164	200164	200164	200164	200164	200164

ITEM	DESCRIPTION	DM-720	DM-840	DM-960	DM-1080	DM-1210	DM-1350
<b>DUAL STAGE (NOT SHOWN) - CONTINUED</b>							
61A	THERMOWELL .....	69039-1	69039-1	69039-1	69039-1	69039-1	69039-1
69	CONTROL LIMIT .....	<u>97474-1</u>	<u>97474-1</u>	<u>97474-1</u>	<u>97474-1</u>	<u>97474-1</u>	<u>97474-1</u>
70	GAS VALVE .....	69392	69392	69392	69392	69390	69390
<b>MODULATING (NOT SHOWN)</b>							
67	GAS VALVE .....	<u>69388</u>	<u>69388</u>	<u>69388</u>	<u>69388</u>	<u>69387</u>	<u>69387</u>
71	ACTUATOR .....	69164	69164	69164	69164	69164	69164
74	CONTROL COMBINATION HIGH LIMIT .....	<u>192403</u>	<u>192403</u>	<u>192403</u>	<u>192403</u>	<u>192403</u>	<u>192403</u>
74A	THERMOWELL .....	<u>95545-1</u>	<u>95545-1</u>	<u>95545-1</u>	<u>95545-1</u>	<u>95545-1</u>	<u>95545-1</u>
75	SPST RELAY .....	69418	69418	69418	69418	69418	69418
76	TEMPERATURE CONTROL-DB .....	69165-1	69165-1	69165-1	69165-1	69165-1	69165-1
	TEMPERATURE CONTROL-DW .....	69215-1	69215-1	69215-1	69215-1	69215-1	69215-1
76A	THERMOWELL .....	69217	69217	69217	69217	69217	69217
77	VALVE BODY .....	99860-1	99860-1	99860-1	99860-1	99860-2	99860-2
<b>PILOT ASSEMBLY</b>							
80	REGULATOR .....	99382	99382	99382	99382	99382	99382
81	SOLENOID VALVE .....	<u>77782-3</u>	<u>77782-3</u>	<u>77782-3</u>	<u>77782-3</u>	<u>77782-3</u>	<u>77782-3</u>
82	PILOT ASSEMBLY .....	<u>210871-2</u>	<u>210871-2</u>	<u>210871-2</u>	<u>210871-2</u>	<u>210871-2</u>	<u>210871-2</u>
85	PILOT TUBE (ALUMINUM) .....	<u>1417-60</u>	<u>1417-60</u>	<u>1417-60</u>	<u>1417-60</u>	<u>1417-60</u>	<u>1417-60</u>
86	GROUND WIRE .....	<u>170889-69</u>	<u>170889-69</u>	<u>170889-69</u>	<u>170889-69</u>	<u>170889-69</u>	<u>170889-69</u>
87	VALVE-PILOT 90° .....	200683	200683	200683	200683	200683	200683
<b>INSULATION KITS.</b>							
	(w/o *Flue Collector & *Heat Exchanger Insulation)	210045	210045-1	210045-2	210045-3	210045-4	210045-5
88	*FLUE COLLECTOR INSULATION .....	69227-1(28)	69227-1(31)	69227-1(33)	69227-1(32)	69227-1(35)	69227-1(37)
89	INSULATION - HIGH TEMP. BOARD .....	200239(2)	200239-1(2)	200239-2(2)	200239-4(2)	200239-5(2)	200239-7(2)
	INSULATION - HIGH TEMP. BOARD .....			200239-3(2)		200239-6(2)	200239-8(2)
	INSULATION - HIGH TEMP. BOARD .....	200240(2)	200240(2)	200240(2)	200240-1(2)	200240-1(2)	200240-1(2)
90	INSULATION - LOW TEMP. END BOARD .....	200238(2)	200238(2)	200238(2)	200238-1(2)	200238-1(2)	200238-1(2)
	INSULATION - LOW TEMP. END BOARD .....	NA	200238-3(2)	NA	NA	NA	NA
91	INSULATION - LOW TEMP. SIDE BOARD .....	210044(2)	210044-1(2)	210044-1(2)	210044-4(2)	210044-5(2)	210044-5(2)
	INSULATION - LOW TEMP. SIDE BOARD .....			210044-3(2)		210044-6(2)	210044-8(2)
92	*HEAT EXCHANGER INSULATION .....	69294-3(2)	69294-3(2)	69294-3(2)	69294-3(2)	69294-3(2)	69294-3(2)
93	INSULATION .....	210550	210550-1	210550-2	210550-3	210550-4	210550-5
<b>GAUGE PACKAGE</b>							
94	GAUGE PANEL (Left Hand Water) .....	200296	200296-1	200296-2	200296-3	200296-4	200296-5
94A	GAUGE PANEL (Right Hand Water) .....	200296-6	200296-7	200296-8	200296-9	200296-10	200296-11
95	PRESSURE GAUGE .....	5120	5120	5120	5120	5120	5120
96	TEMPERATURE GAUGE .....	5119	5119	5119	5119	5119	5119
<b>RELIEF VALVE</b>							
97	HOT WTR. SUPPLY BOILER (DW)-125psi .....	98883-3	98883-3	98883-3	98883-3	98883-3	98883-3
98	HOT WTR. HEATING BOILER (DB)-50psi .....	210451	210451	210451-1	210451-1	210451-1	210451-2
<b>MISCELLANEOUS/OPTIONAL</b>							
99	ACCESS DOOR HANDLE .....	200352	200352	200352	200352	200352	200352
100	BURNER TOP HEAT SHIELD .....				200333	200333-1	200333-2
101	DRAIN VALVE .....	26273-5	26273-5	26273-5	26273-5	26273-5	26273-5
104	FLOW SWITCH .....	210176	210176	210176	210176	210176	210176
105	HEAT SHIELD - FRONT .....	200421	200421-1	200421-2	200335	200335-1	200335-2
106	HEAT SHIELD - REAR .....	200450	200450-1	200450-2	200330	200330-1	200330-2
107	INSTALLATION MANUAL .....	210265	210265	210265	210265	210265	210265
108	LOW WATER CUTOFF .....	99915-1	99915-1	99915-1	99915-1	99915-1	99915-1
109	THERMAL BALANCER .....	98190	98190	98190	98190	98190	98190
110	THERMOMETERS .....	93042	93042	93042	93042	93042	93042
111	USER MANUAL .....	200378-1	200378-1	200378-1	200378-1	200378-1	200378-1

\*Feet of insulation required.

## PART 2: Models DB/DW-1480 THRU 1810

### INTEGRAL FIN TUBES:

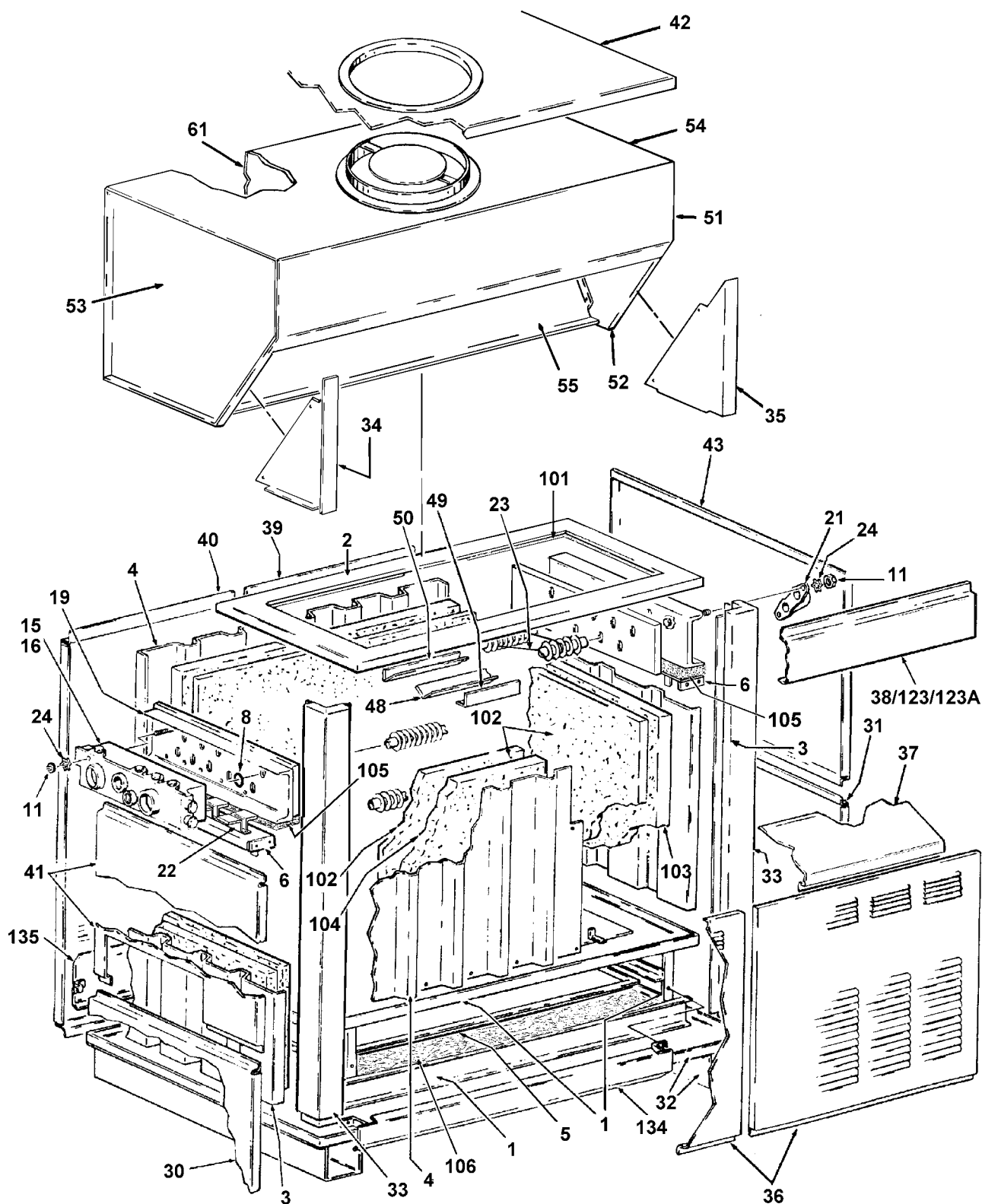
- DB/DW-1480 Thru DB/DW-1810
- Requires 8 Top Tubes/8 Bottom Tubes

NOTE: Top Tubes contain 7 fins per inch,  
Bottom Tubes contain 5 fins per inch.

Product Preservers®

### Item # 101: 1/8" DURAMAX INSULATION PAD:

DB/DW-1480	33 Ft.	69227-33
DB/DW-1610	35 Ft.	69227-35
DB/DW-1810	37.5 Ft.	69227-38



**MODULATING OPTION SHOWN:**

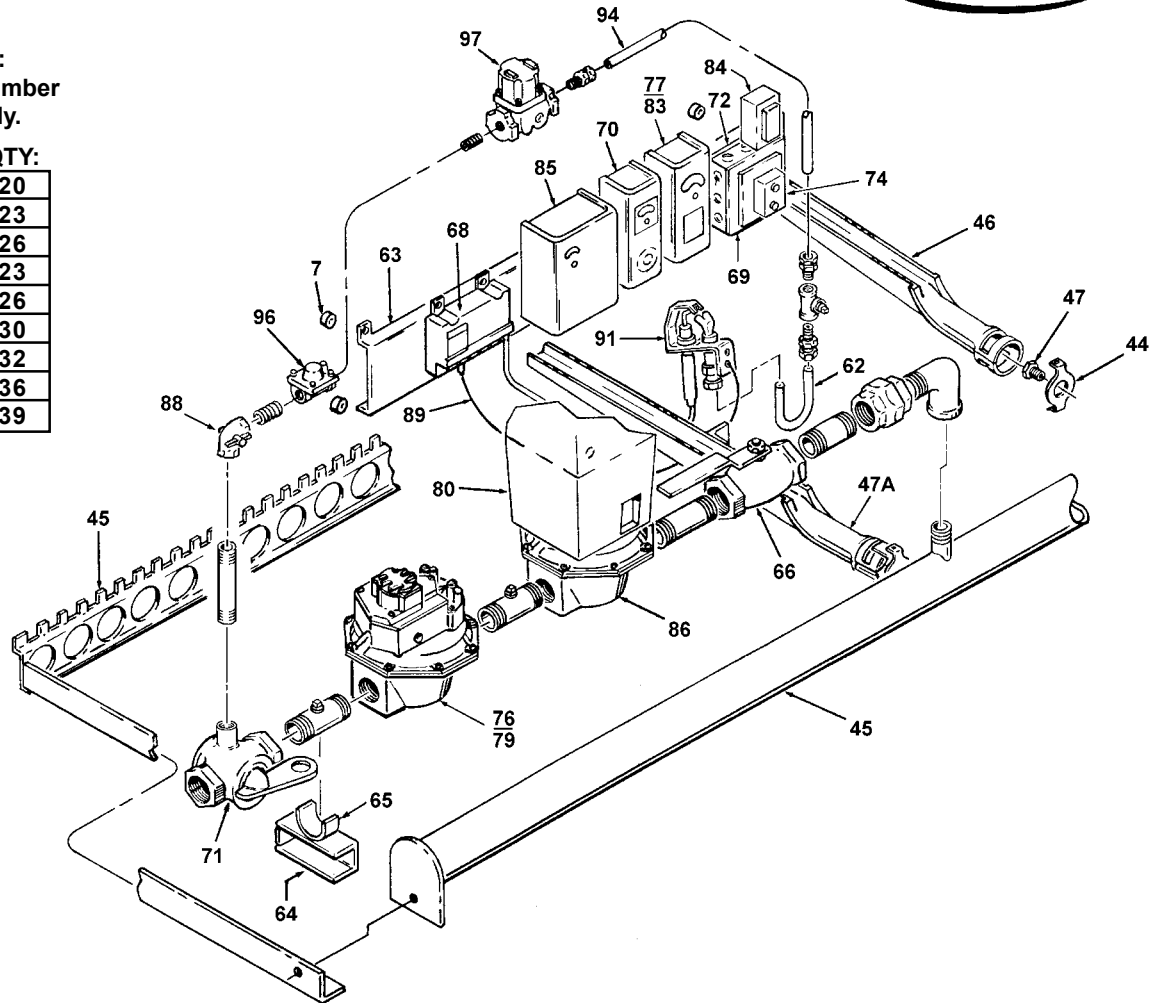
- For MODULATING Models DB/DW 720 thru 1350 refer to *Part One* illustrations & numbering system refer to pages 1-4.
- Models DB/DW 1480 thru 1810 refer to *Part Two* illustrations & numbering system refer to pages 5-8.



**BURNER ASSEMBLIES:**

\*Quantity indicates number of burners in assembly.

MODEL:	QTY:
DB/DW-720	20
DB/DW-840	23
DB/DW-960	26
DB/DW-1080	23
DB/DW-1210	26
DB/DW-1350	30
DB/DW-1480	32
DB/DW-1610	36
DB/DW-1810	39



**PART 2 Models DB/DW-1480 THRU 1810**

Part numbers underlined are recommended stock items.

ITEM	DESCRIPTION	DM-1480	DM-1610	DM-1810
<b>CHASSIS</b>				
1	CHASSIS BASE FRAME ASSEMBLY .....	200434	200471	200432
2	CHASSIS TOP FRAME RAIL ASSEMBLY .....	200722-1	200722-2	200721-3
3	CORRUGATED CHASSIS END PANELS .....	200493-1	200493-1	200493-1
4	CORRUGATED CHASSIS SIDE PANELS .....	200185-6	200185-7	200185-8
5	DRIP TRAY ASSEMBLY .....	200486	200486-1	200486-2
6	HEAT EXCHANGER CHASSIS SUPPORT .....	200622-1	200622-1	200622-1
7	INSULATOR .....	32779-2	32779-2	32779-2
<b>HEAT EXCHANGER</b>				
8	"O" RING SEALS .....	<u>200133</u>	<u>200133</u>	<u>200133</u>
11	3/8-16 HEX NUT .....	20099-1	20099-1	20099-1
15	INLET/OUTLET MANIFOLD STANDARD UNITS .....	200692-1	200692-1	200692-1
16	INLET/OUTLET MANIFOLD MODULATING OR UNITS WITH GAUGES .....	200692	200692	200692
19	HEAT EXCHANGER .....	SEE COMPLETE HEAT EXCHANGER TABLE ON PAGE 8		
21	RETURN BENDS .....	200699-1	200699-1	200699-1
22	HEAT EXCHANGER SUPPORT .....	200583	200583	200583
23	HEAT EXCHANGER SUPPORT WIRE .....	200587-21	200587-21	200587-24
		(8 PCS.)	(16 PCS.)	(16 PCS.)
24	SHAKE PROOF WASHER .....	200366	200366	200366

ITEM	DESCRIPTION	DM-1480	DM-1610	DM-1810
<b>CABINET</b>				
30	BOTTOM LEFT SIDE CABINET PANEL .....	200409	200409	200409
31	BOTTOM RIGHT SIDE CABINET PANEL .....	200410	200410	200410
32	CABINET BASE ASSEMBLY .....	200494	200494-1	200494-2
33	CORNER POSTS .....	200158-4	200158-4	200158-4
34	DRAFT HOOD FILL IN PANEL (LEFT) .....	200462	200462	200462
35	DRAFT HOOD FILL IN PANEL (RIGHT) .....	200461	200461	200461
36	FRONT ACCESS PANEL .....	200425	200475	200414
37	FRONT INCLINE PANEL .....	200478	200478-1	200478-2
38	FRONT TOP PANEL .....	200460	200460-1	200460-2
39	REAR COVER PANEL (LEFT) .....	200502	200503	200504
40	REAR COVER PANEL (RIGHT) .....	200426	200474	200413
41	TOP LEFT SIDE CABINET PANEL .....	200411	200411	200411
42	TOP PANEL ASSEMBLY .....	200481	200481-1	200481-2
43	TOP RIGHT SIDE CABINET PANEL .....	200412	200412	200412
<b>BURNER TRAY</b>				
44	BURNER CLIPS .....	98044	98044	98044
45	BURNER TRAY ASSEMBLY .....	200466	200473	200516
46	BURNERS STAINLESS STEEL .....	69509	69509	69509
47	ORIFICES (Sea Level) .....	29366-31	29366-31	29366-31
47A	BURNER WITH PILOT BRACKET .....	69510-2	69510-2	69510-2
<b>FLUE COLLECTOR AND DRAFT HOOD</b>				
48	FLUE BAFFLES .....	200438-4	200438-5	200438-6
49	END FLUE BAFFLE - FRONT .....	200515-3	200515-4	200515-5
	Left hand water, rear on right hand water units.			
50	END FLUE BAFFLE - REAR .....	200440-3	200440-4	200440-5
	Left hand water, front on right hand water units.			
51	DRAFT HOOD FRONT SHELF ASSEMBLY .....	200441	200441-1	200441-2
52	DRAFT HOOD RIGHT SIDE PANEL .....	200451	200451	200451
53	DRAFT HOOD LEFT SIDE PANEL .....	200452	200452	200452
54	DRAFT HOOD TOP PANEL ASSEMBLY .....	200625	200625-1	200625-2
55	FLUE COLLECTOR PANEL .....	200455	200455-1	200455-2
61	DRAFT HOOD REAR PANEL .....	200563	200563-1	200563-2
<b>GAS CONTROL</b>				
62	PILOT TUBE .....	99528-1	99528-1	99528-1
63	CONTROL MOUNTING PANEL .....	200367	200367	200367
64	CONTROL STRING SUPPORT .....	200365	200365	200365
65	CONTROL STRING SUPPORT CLIP .....	200389-1	200389-1	200389-1
66	FIRING VALVE .....	69010-2	69022-2	69022-2
68	IGNITION MODULE .....	<u>191182-2</u>	<u>191182-2</u>	<u>191182-2</u>
69	JUNCTION BOX .....	93558	93558	93558
71	MANUAL VALVE .....	96479-3	69143	69143
72	THERMAL BALANCER .....	98190	98190	98190
74	TRANSFORMER .....	69170	69170	69170
75	WIRING HARNESS .....	200530	200530	200530
<b>SINGLE STAGE (NOT SHOWN)</b>				
67	REDUNDANT GAS VALVE .....	78482-2	78482-3	78482-3
76	GAS VALVE .....	<u>69387</u>	<u>69386</u>	<u>69386</u>
77	CONTROL COMBINATION HIGH LIMIT .....	<u>192403</u>	<u>192403</u>	<u>192403</u>
77A	THERMOWELL .....	95545-1	95545-1	95545-1
<b>DUAL STAGE (NOT SHOWN)</b>				
67	REDUNDANT GAS VALVE .....	78482-2	78482-3	78482-3
70	MANUAL RESET HIGH LIMIT .....	<u>200164</u>	<u>200164</u>	<u>200164</u>
70A	THERMOWELL .....	<u>69039-1</u>	<u>69039-1</u>	<u>69039-1</u>
78	DUAL LIMIT .....	<u>97474-1</u>	<u>97474-1</u>	<u>97474-1</u>
79	GAS VALVE .....	<u>69390</u>	<u>69389</u>	<u>69389</u>

ITEM	DESCRIPTION	DM-1480	DM-1610	DM-1810
------	-------------	---------	---------	---------

**MODULATING**

76	GAS VALVE .....	69387	69386	69386
80	ACTUATOR .....	69164	69164	69164
83	CONTROL COMBINATION HIGH LIMIT .....	192403	192403	192403
83A	THERMOWELL .....	95545-1	95545-1	95545-1
84	SPST RELAY .....	69418	69418	69418
85	TEMPERATURE CONTROL-DB .....	69165-1	69165-1	69165-1
85	TEMPERATURE CONTROL-DW .....	69215-1	69215-1	69215-1
85A	THERMOWELL .....	69217	69217	69217
86	VALVE BODY .....	99860-2	99860-3	99860-3

**PILOT ASSEMBLY**

88	VALVE-PILOT 90° .....	200683	200683	200683
89	GROUND WIRE .....	170889-69	170889-69	170889-69
91	PILOT ASSEMBLY .....	210871-2	210871-2	210871-2
94	PILOT TUBE (ALUMINUM) .....	1417-60	1417-60	1417-60
96	REGULATOR .....	99382	99382	99382
97	SOLENOID VALVE .....	77782-3	77782-3	77782-3

**INSULATION KITS (w/o \*Flue Collector and \*Heat Exchanger Insulation).** .....

*101	FLUE COLLECTOR INSULATION .....	69227-1(33)	69227-1(35)	69227-1(38)
102	INSULATION - HIGH TEMP. BOARD .....	200239-9(2)	200239-9(2)	200239-9(2)
	INSULATION - HIGH TEMP. BOARD .....	200239-10(2)	200239-11(2)	200239-12(2)
	INSULATION - HIGH TEMP. BOARD .....	200240-2(2)	200240-2(2)	200240-2(2)
103	INSULATION - LOW TEMP. END BOARD .....	200238-2(2)	200238-2(2)	200238-2(2)
104	INSULATION - LOW TEMP. SIDE BOARD .....	210044-10(2)	210044-11(2)	210044-12(2)
	INSULATION - LOW TEMP. SIDE BOARD .....	210044-9(2)	210044-9(2)	210044-9(2)
*105	HEAT EXCHANGER INSULATION (2 Required) .....	69294-3	69294-3	69294-3
106	INSULATION .....	210550-6	210550-7	210550-8

**GAUGE PACKAGE**

123	GAUGE PANEL (Left Hand Water) .....	200568	200568-1	200568-2
123A	GAUGE PANEL (Right Hand Water) .....	200568-3	200568-4	200568-5
124	PRESSURE GAUGE .....	5120	5120	5120
125	TEMPERATURE GAUGE .....	5119	5119	05119

**RELIEF VALVE**

126	HOT WATER SUPPLY BOILER (DW) - 125psi .....	98883-3	98883-3	98883-3
127	HOT WATER HEATING BOILER (DB) - 50psi .....	210451-2	210451-2	210451-2

**MISCELLANEOUS/OPTIONAL**

129	DRAIN VALVE .....	26273-5	26273-5	26273-5
133	FLOW SWITCH .....	210176	210176	210176
134	HEAT SHIELD - FRONT ASSEMBLY .....	200487	200487-1	200487-2
135	HEAT SHIELD - REAR ASSEMBLY .....	200477	200477-1	200477-2
136	INSTALLATION MANUAL .....	210265	210265	210265
139	THERMOMETERS .....	93042	93042	93042
140	USER MANUAL .....	200378-1	200378-1	200378-1
141	LOW WATER CUTOFF .....	99915-1	99915-1	99915-1
142	THERMAL BALANCE .....	98190	98190	98190

\* Feet of insulation required.

**HEAT EXCHANGER TABLE**

Part numbers underlined are recommended stock items.

PART NO:	USAGE:	PART NO:	USAGE:	PART NO:	USAGE:
200686-1	DB/DW-720, COPPER	200693-3	DB/DW-1480, COPPER	210617	DB/DW-1080, CUPRA NICKEL
200686-2	DB/DW-840, COPPER	200693-4	DB/DW-1610, COPPER	210617-1	DB/DW-1210, CUPRA NICKEL
200686-3	DB/DW-960, COPPER	200693-5	DB/DW-1810, COPPER	210617-2	DB/DW-1350, CUPRA NICKEL
200693	DB/DW-1080, COPPER	210616	DB/DW-720, CUPRA NICKEL	210617-3	DB/DW-1480, CUPRA NICKEL
200693-1	DB/DW-1210, COPPER	210616-1	DB/DW-840, CUPRA NICKEL	210617-4	DB/DW-1610, CUPRA NICKEL
200693-2	DB/DW-1350, COPPER	210616-2	DB/DW-960, CUPRA NICKEL	210617-5	DB/DW-1810, CUPRA NICKEL



**A.O. SMITH**  
**WATER PRODUCTS**  
**COMPANY**  
 PSD / Alsip, IL

**A.O. SMITH WATER PRODUCTS CO., INC.**  
 5621 W. 115TH STREET • ALSIP, ILLINOIS 60803  
 PHONE: 1-800-433-2545 • FAX: 1-800-433-2515  
 Website: WWW.HOTWATER.COM • EMAIL: PARTS@HOTWATER.COM