

A.O. SMITH

WATER PRODUCTS COMPANY

PSD-1-750

ELECTRIC

RESIDENTIAL WATER HEATER PARTS LIST
 MODELS PLJF - 6 THRU 50
 SERIES 918

ITEM 14

PATENT NUMBER 5-391-834
 PATENT NUMBER 5-398-69

TURN OFF POWER BEFORE SERVICING

SCALD HAZARD
 DANGER ELECTRIC SHOCK HAZARD

SCALD HAZARD
 DANGER ELECTRIC SHOCK HAZARD

C2, S1,
 UPPER A-6
 LOWER A-7

LOWER A-6

UPPER A-7

RELIEF VALVE

23

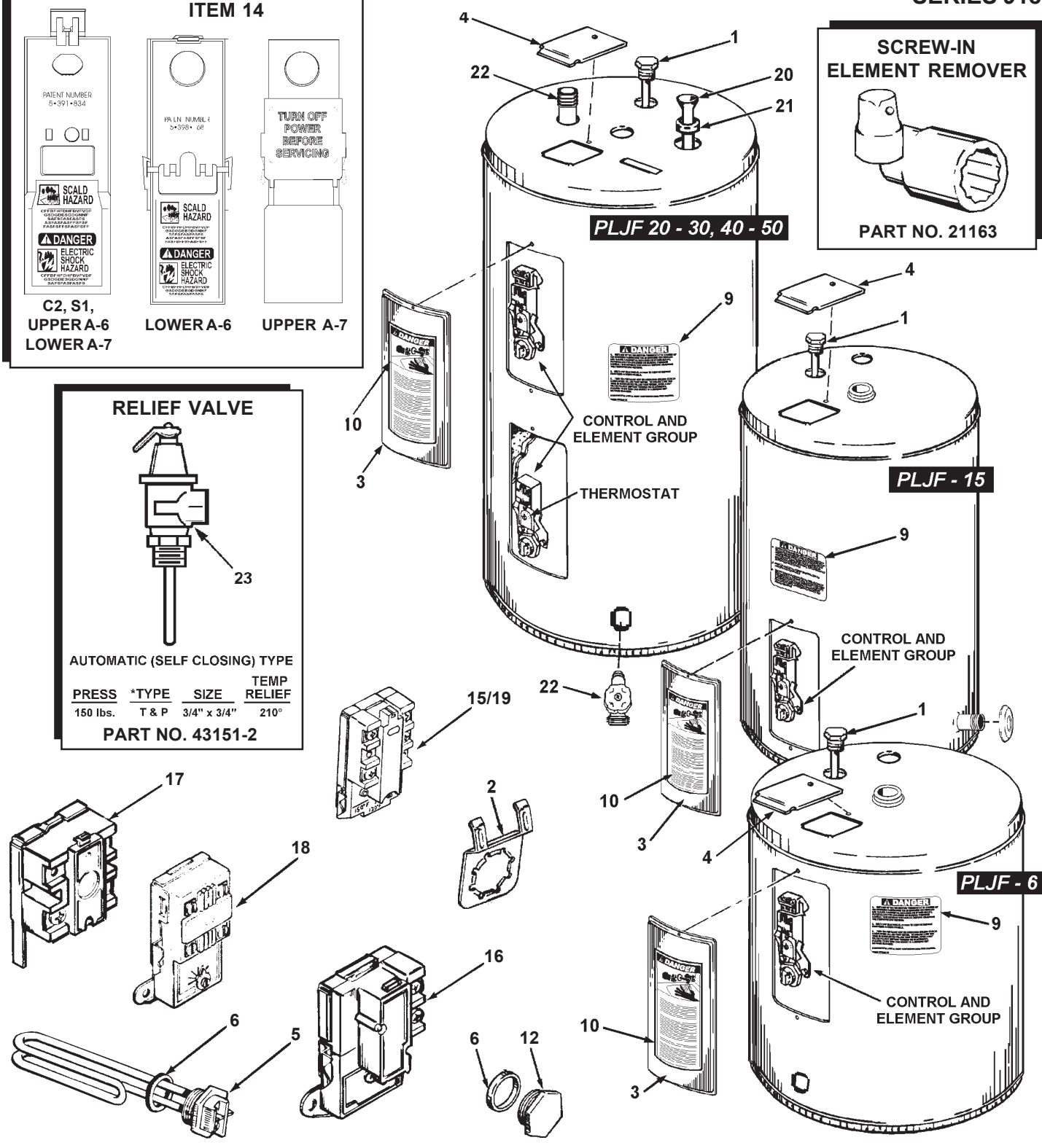
AUTOMATIC (SELF CLOSING) TYPE

PRESS	*TYPE	SIZE	TEMP RELIEF
150 lbs.	T & P	3/4" x 3/4"	210°

PART NO. 43151-2

SCREW-IN ELEMENT REMOVER

PART NO. 21163



A.O. SMITH WATER PRODUCTS CO., INC.
 5621 W. 115TH STREET • ALSIP, ILLINOIS 60803
 PHONE: 1-800-433-2545 • FAX: 1-800-433-2515
 Website: www.hotwater.com • email: parts@hotwater.com

Item	Description	PLJF-6 918	PLJF-15 918	PLJF-20 918	PLJF-30 918	PLJF-40 918	PLJF-50 918
1	Anode, Plug	183463-9	183463-16	183463-16	183463-19	183463-23	183463-29
2	Bracket, Thermostat	182707	182707	182707	182707	182707	182707
3	Cover, Front	181260	181260	181260	38428	38428	38428
4	Cover, Junction Box	43441	43441	43441	43441	43441	43441
5	Element, Heating	REFER TO ELEMENT CHART ON PAGE 5					
6	Gasket, Element (Included with Item 5)	23789	23789	23789	23789	23789	23789
8	*Instruction Manual	183495	183495	183495	183495	183495	183495
LABELS							
9	Danger Label	182755	182755	182755	182755	182755	182755
10	Scald Warning Label	181138	181138	181138	181138	181138	181138
11	*Temperature Warning Label	182734	182734	182734	182734	182734	182734
12	Plug, Element	42290	42290	42290	42290	42290	42290
14	Protector, Personnel C-2, S-1, Upper A-6, Lower A-7	182360	182360	182360	182360	182360	182360
14	Protector, Personnel Lower A-6	----	----	----	182117	182117	182117
15	Thermostat, S-1, Upper A-6	----	----	----	182354	182354	182354
16	Thermostat, Lower A-6	----	----	----	23897-1	23897-1	23897-1
	Thermostat, Upper A-7	----	----	----	----	----	----
17	High Limit	----	----	----	38017	38017	38017
18	Thermostat, Double Throw	----	----	----	38008	38008	38008
19	Thermostat, C-2, Lower A-7	182353	182353	182353	182353	182353	182353
20	Tube, Inlet	----	----	21062-26	21062-26	21062-26	21062-26
21	Spacer, Inlet Tube (included with item 19)	----	----	42589-1	42589-1	42589-1	42589-1
22	Valve, Drain	----	----	42037-3	42037-3	42037-4	42037-4
23	Valve, T & P Relief	43151-2	43151-2	43151-2	43151-2	43151-2	43151-2

NOTE: Undelined parts are recommended stock items for emergency replacement.

* Not illustrated.

ELEMENT CHART					
SCREW-IN ELEMENTS for PROMAX WATER HEATERS					
Wattage	120V	208V	240V	277V	480V
1000	23790-2	----	23791-2	----	----
1500	23790-4	23775-4	23791-4	23782-4	----
2000	23790-5	23775-5	23791-5	23782-5	----
2500	23790-6	23755-6	23791-6	23782-6	23783-6
3000	23790-7	23775-7	23791-7	23782-7	23783-7
3500	----	----	23791-8	----	----
4000	----	23775-9	23791-9	----	23783-9
4500	----	23775-10	23791-10	23782-10	23783-10
5000	----	23775-11	23791-11	----	23783-11
5500	----	----	23791-14	----	----
6000	----	23775-12	23791-12	23782-12	23783-12

NOTE: 1000 Watts = 1 Kilowatt

All elements are individually boxed unless specified.

For bagged elements, add suffix-D (i.e.: 23791-10-D).



A.O. SMITH
WATER PRODUCTS
COMPANY
 PSD / Alsip, IL

A.O. SMITH WATER PRODUCTS CO., INC.
 5621 W. 115TH STREET • ALSIP, ILLINOIS 60803
 PHONE: 1-800-433-2545 • FAX: 1-800-433-2515
 Website: www.hotwater.com • Email: parts@hotwater.com