



Date: December 20, 1999
Subject: Gas Water Heater Conversion Policy
To: All Accounts

No. 137 Rev. 2

* This supersedes all previous letters and field bulletins concerning residential and commercial water heater conversion.

GAS WATER HEATER CONVERSION POLICY

All A.O. Smith Water Products Company's residential and commercial gas water heaters are designed certified by CSA or UL, under ANSI Standards for operation on one type of gas only, as indicated on the water heater's model number and rating plate.

A.O. Smith realizes that there may be certain situations where a field conversion may be necessary and in order to facilitate such a conversion, A. O. Smith complies with CSA or UL regulations ensuring that a field conversion be appropriately and safely completed.

An improper field conversion from one type of gas to another could cause potentially dangerous conditions that may cause an explosion or fire resulting in property damage, bodily injury or both.

A.O. SMITH WILL ONLY ALLOW THE CONVERSION OF GAS WATER HEATERS FROM LP GAS (PROPANE) TO NATURAL GAS. THE CONVERSION OF A GAS WATER HEATER FROM NATURAL GAS TO LP GAS (PROPANE) IS NOT ALLOWED UNDER ANY CIRCUMSTANCES.

A.O. Smith will provide kits as demand warrants through our Parts Department, phone no. 1-800-433-2545. Prices, dimensions and specifications are subject to change without notice.

Each conversion kit is to be installed by an A.O. Smith service agent or a gas utility serviceman in accordance with A.O. Smith's written instructions and all codes and requirements of the authority having jurisdiction. Failure to follow instructions could result in serious injury or property damage. The utility performing this work assumes responsibility for this conversion.

Changing the Input on Gas Water Heaters

The only changes to the input of a gas water heater allowed are:

- Adjustments to match that shown on the rating plate of the heater. The installation instructions supplied with the heater indicate if adjustments to input are a required procedure.
- Changes made as required to adjust the heater for proper operation at high altitude as determined by a qualified service technician. Service manuals include the proper procedure for adjusting heaters at high altitudes.

Conversion of Gas Water Heaters

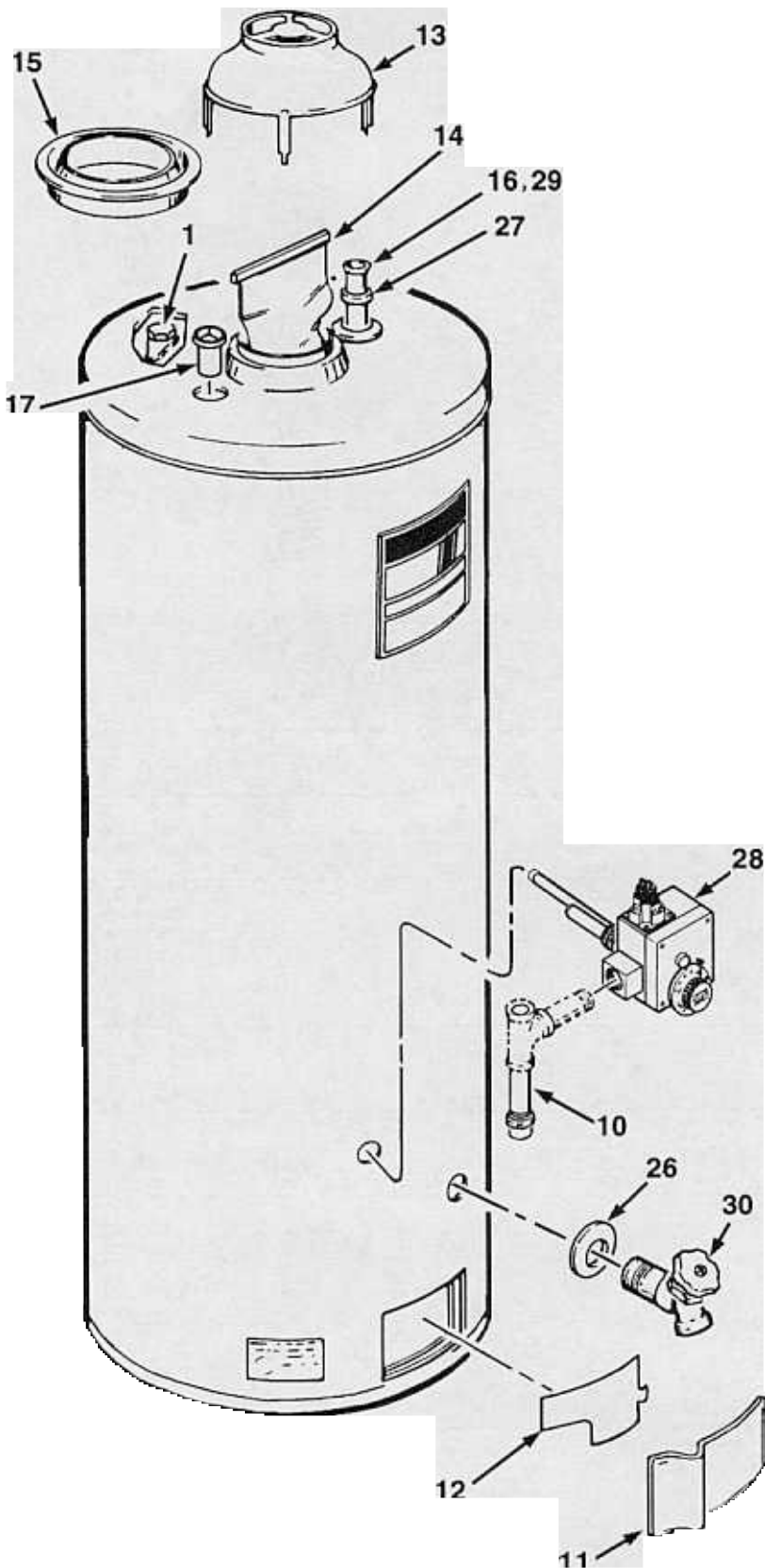
The conversion of LP gas (Propane) to Natural gas is ONLY allowed providing:

- The conversion is done as part of a gas utility's program where propane appliances were installed anticipating the completion of natural gas service to the area. The conversion must be done under the direct supervision of the utility and by their service representatives.

Claims of damage or injury arising from the unauthorized conversion of any A.O. Smith water heater not design certified for conversion will be the complete and total responsibility of the person or entity making the conversion.

If you have any questions regarding the above policy, please contact the A.O. Smith Parts Department at 1-800-433-2545 or our Technical Information Center at 1-800-527-1953.

A.O. SMITH WATER PRODUCTS CO., INC.
5621 W. 115TH STREET • ALSIP, ILLINOIS 60803
PHONE: 1-800-433-2545
FAX: 1-800-433-2515 • www.hotwater.com



RELIEF VALVE

Temperature & Pressure
 AUTOMATIC (SELF CLOSING) TYPE

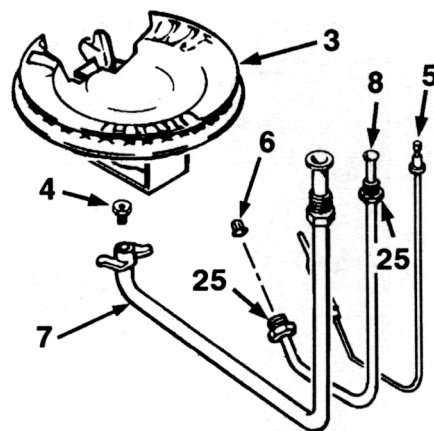
PRESS.	TYPE	SIZE	TEMP RELIEF
150 lbs.	T & P	3/4" X 3/4"	210°

PART NO.
 23740-1

31

MAIN GAS SHUTOFF

[2] BURNER ASSEMBLY



Item	Description	FSG/PGX-30 216/217	FSG/PGX-40 216/217	FSG/PGX-40C 216/217	FSG/PGX-50 216/217
1	ANODE				
	FSG Models	43817-25	43817-29	43817-29	43817-35
	PGX Models	180618-44	180618-42	----	180618-44
2	BURNER ASSEMBLY, MAIN - Natural	181091-4	181087-4	181087-4	181089-0
	BURNER ASSEMBLY, MAIN - Propane	181091-5	181087-5	181087-5	181089-1
3	Burner Head/Pilot - Natural	180940	180940	180940	180940
	Burner Head/Pilot - Propane	180940-1	180940-1	180940-1	180940-1
4	Orifice, Main Burner - Natural	29366-37	29366-37	29366-37	29366-31
	Orifice, Main Burner - Propane	181510-52	181510-52	181510-52	181510-48
5	Thermocouple	23675	23675	23675	23675
6	Orifice, Pilot - Natural	180814	180814	180814	180814
	Orifice, Pilot - Propane	180824	180824	180824	180824
7	Tube, Main Burner - Natural	41246-1	41246-2	41246-2	41246-3
	Tube, Main Burner - Propane	41246-1	41246-2	41246-2	41246-3
8	Tube, Pilot	23330	23330	23330	23330
9	* Cover, Cleanout	----	----	38445	----
10	Dirt Leg Assembly - Propane	181206	181206	181206	181206
	DOOR				
11	Outer	180522	180522	180522	180522
12	Inner	180596	180596	180596	180596
13	Draft Hood	39664	39664	39664	39664
14	Flue Baffle	181211	181211	181211	180819
15	Flue Restrictor	----	----	----	34894
	HEAT TRAP (*T* Models)				
16	Inlet	181068-33	181068-33	----	181068-35
17	Outlet	181235	181235	----	181235
18	* Insulation	----	----	43307	----
	LABEL				
19	* Flammable Vapor Warning	181139	181139	181139	181139
20	* Lighting & Operating	180310	180310	180310	180310
21	* Scald Warning	181138	181138	181138	181138
22	* Temperature	182734	182734	182734	182734
23	* Instruction Manual	181658	181658	181658	181658
24	* Instruction Sheet	----	----	180879	----
25	Nut, Compression	32365	32365	32365	32365
26	Pipe Collar	20172-14	20172-14	20172-14	20172-14
27	Spacer, Inlet Tube	42589-1	42589-1	42589-1	42589-1
28	THERMOSTAT				
	Natural	180193-2	180193-2	180193-2	180193-2
	Propane	180192-2	180192-2	180192-2	180192-2
29	Tube, Inlet	160374-26	160374-26	160374-26	160907-35
	VALVE				
30	Drain	42037	42037	42037	42037-1
31	Main Gas Shutoff	181737	181737	181737	181737
	SMR S44				
16	Heat Trap, Inlet	181295-33	181295-33	----	181295-35
29	Tube, Inlet	160375-26	160375-26	160375-26	160501-35
	SMR H43				
16	Heat Trap, Inlet	181295-33	181295-33	----	181295-35
29	Tube, Inlet	160375-26	160375-26	160375-26	160501-35
	Valve, Relief	76527	76527	76527	43151
	SMR R99				
2	BURNER ASSEMBLY, MAIN - Natural	----	----	----	181089-6
3	Burner Head Assembly	----	----	----	180940-2
4	Orifice, Main Burner - Natural	----	----	----	29366-34
23	Manual, Earthquake Instruction	----	----	----	181809
	Nox Flame Spreader Assembly - Natural	----	----	----	181101
	Wing Nut, Flame Spreader	----	----	----	160629
	SMR S06				
2	BURNER ASSEMBLY, MAIN - Natural	----	----	----	181089-2
4	Orifice, Main Burner - Natural	----	----	----	29366-32
23	Manual, Earthquake Instruction	181809	181809	181809	181809
	SMR S19				
1	ANODE				
	FSG Models	43816-42	43816-38	43816-38	43816-44
	PGX Models	29109-44	29109-42	----	29109-44
	SMR K32				
2	BURNER ASSEMBLY, MAIN - Natural	181091-6	181087-6	181087-6	181089-3
4	Orifice, Main Burner - Natural	29366-40	29366-40	29366-40	29366-33
	SMR S29				
1	Anode	----	43816-38	----	43816-42
	Nipple	----	38460-10	----	38469-10
	SMR S45				
1	Anode, Outlet	181125-42	181125-42	----	181125-42
	Nipple	38469-4	38469-4	----	38469-4
	Pipe Plug	92650	92650	----	92650
	Valve, Relief	98987	98987	----	98987
	SMR S22				
10	Dirt Leg Assembly - Propane	181206-1	181206-1	181206-1	181206-1
14	Flue Baffle	181211-1	181211-1	181211-1	----
20	Label - Lighting & Operating	161043	161043	161043	161043
23	Manual, Instruction	180586	180586	180586	180586
	Tube, Relief Valve Runoff	180667	180667	180667	180667
	Valve, Relief	76527	76527	76527	43151
	SMR P83				
	Valve, Relief	76527	76527	76527	43151

Note: Underlined parts are recommended stock items for emergency replacement. Consider gas used in your area only.

* Not illustrated.

T denotes heat trap models.