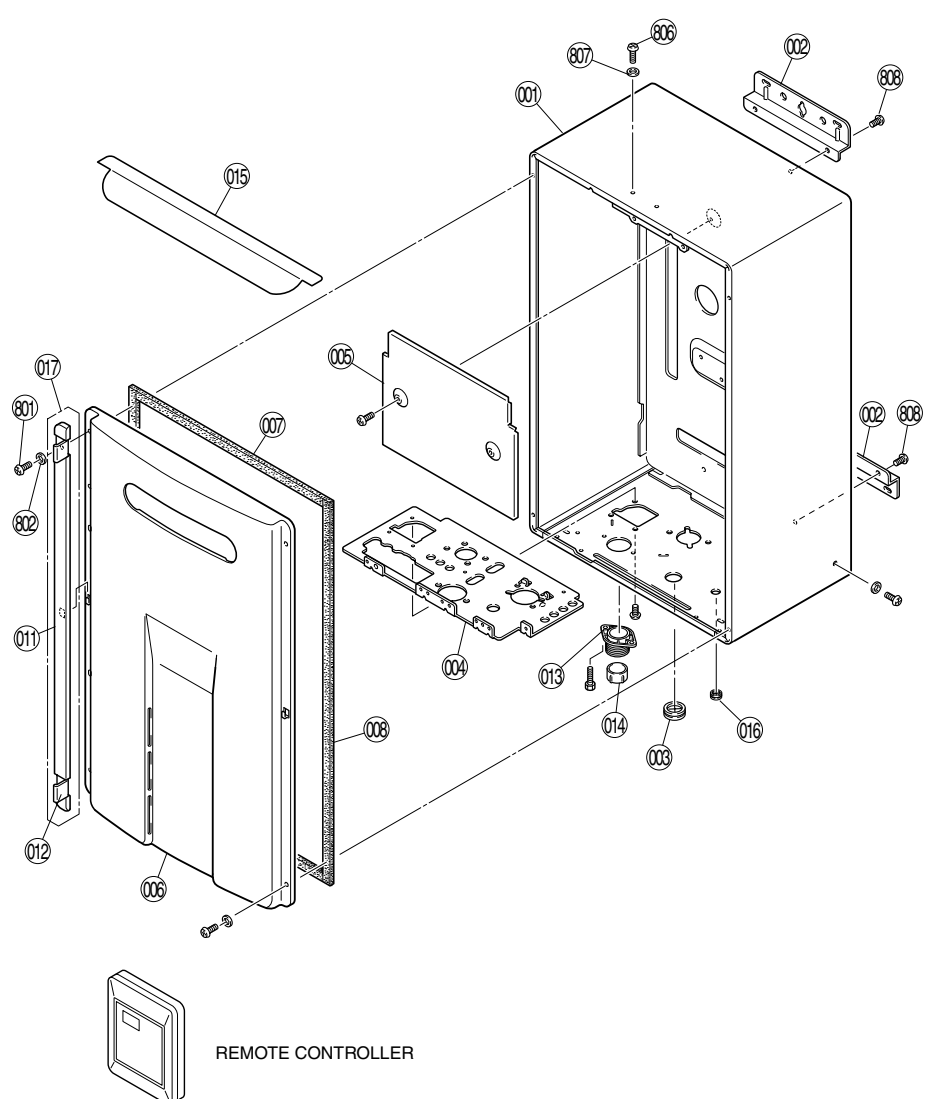
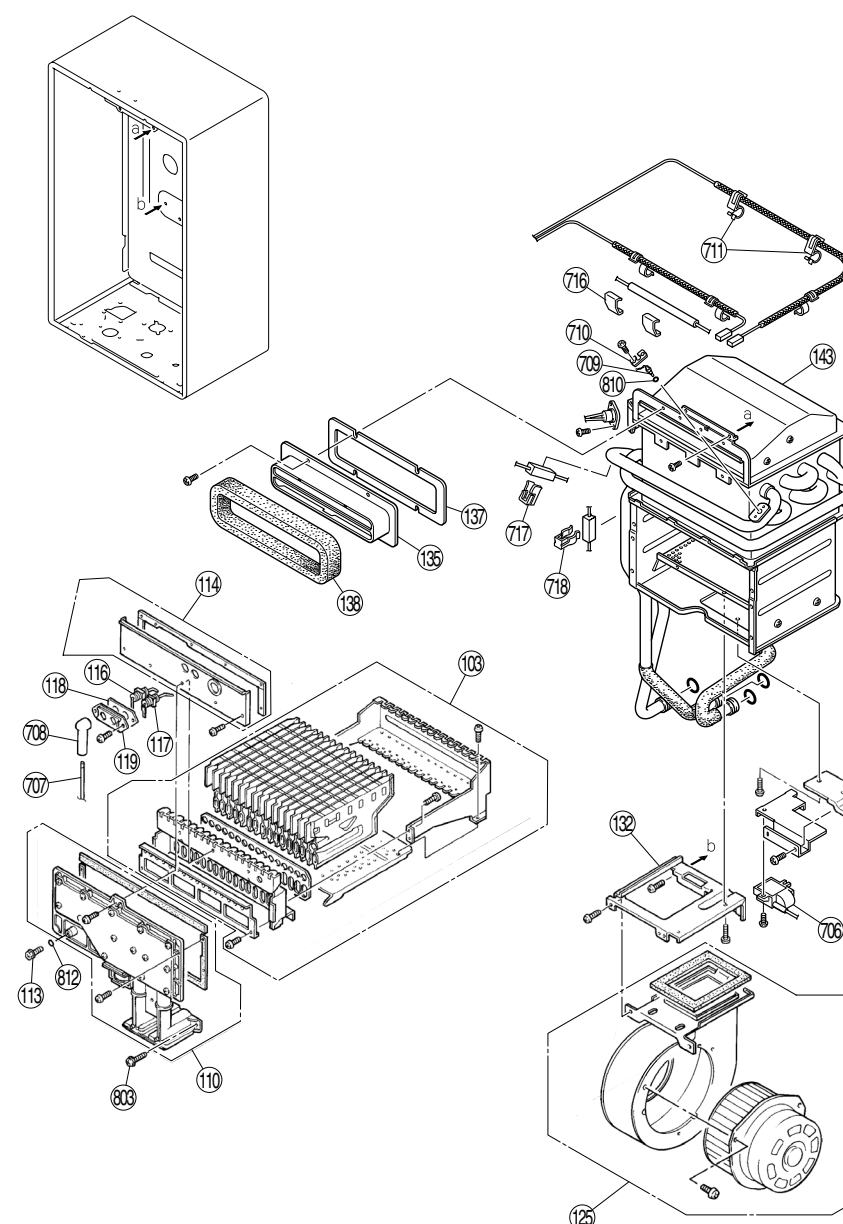




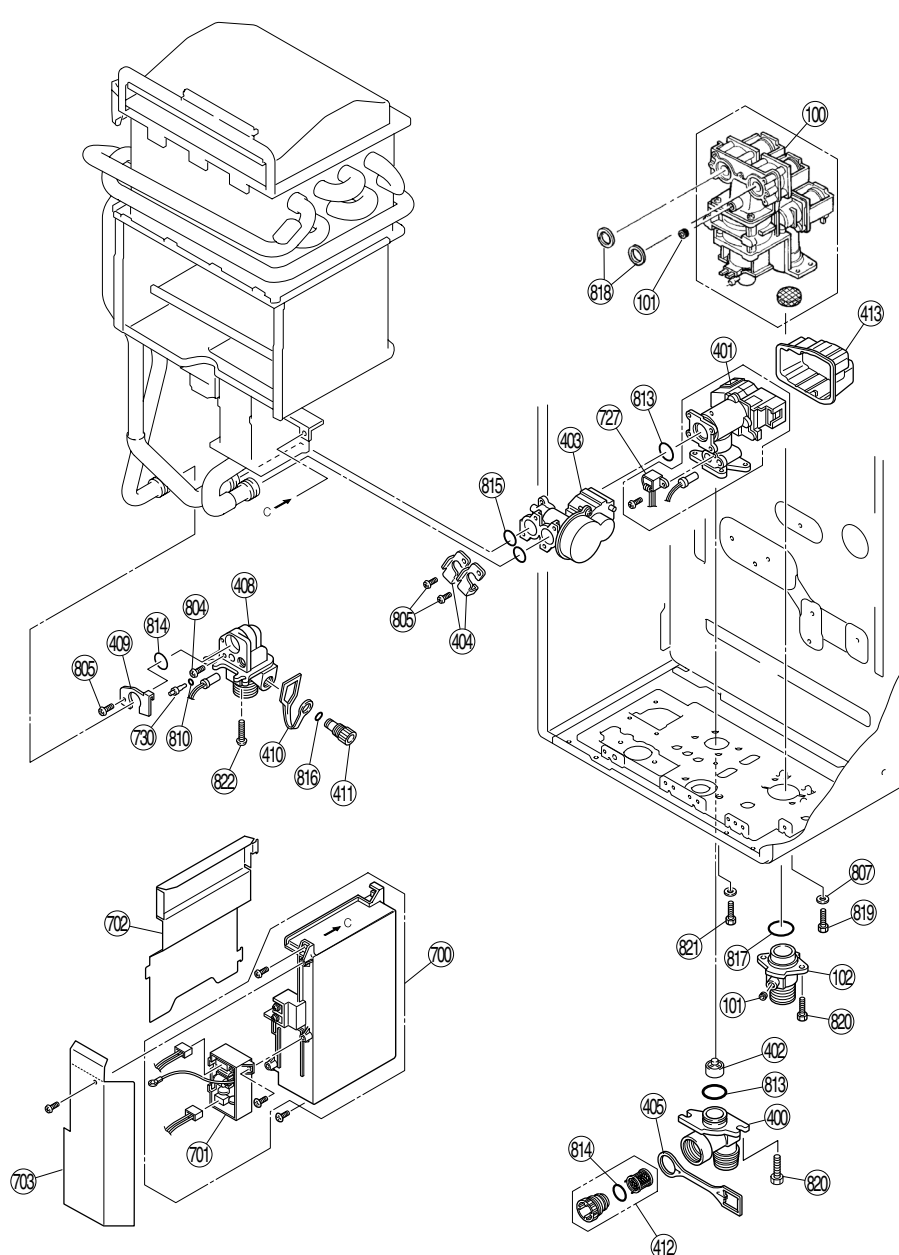
**EXPLODED VIEW - CABINET**



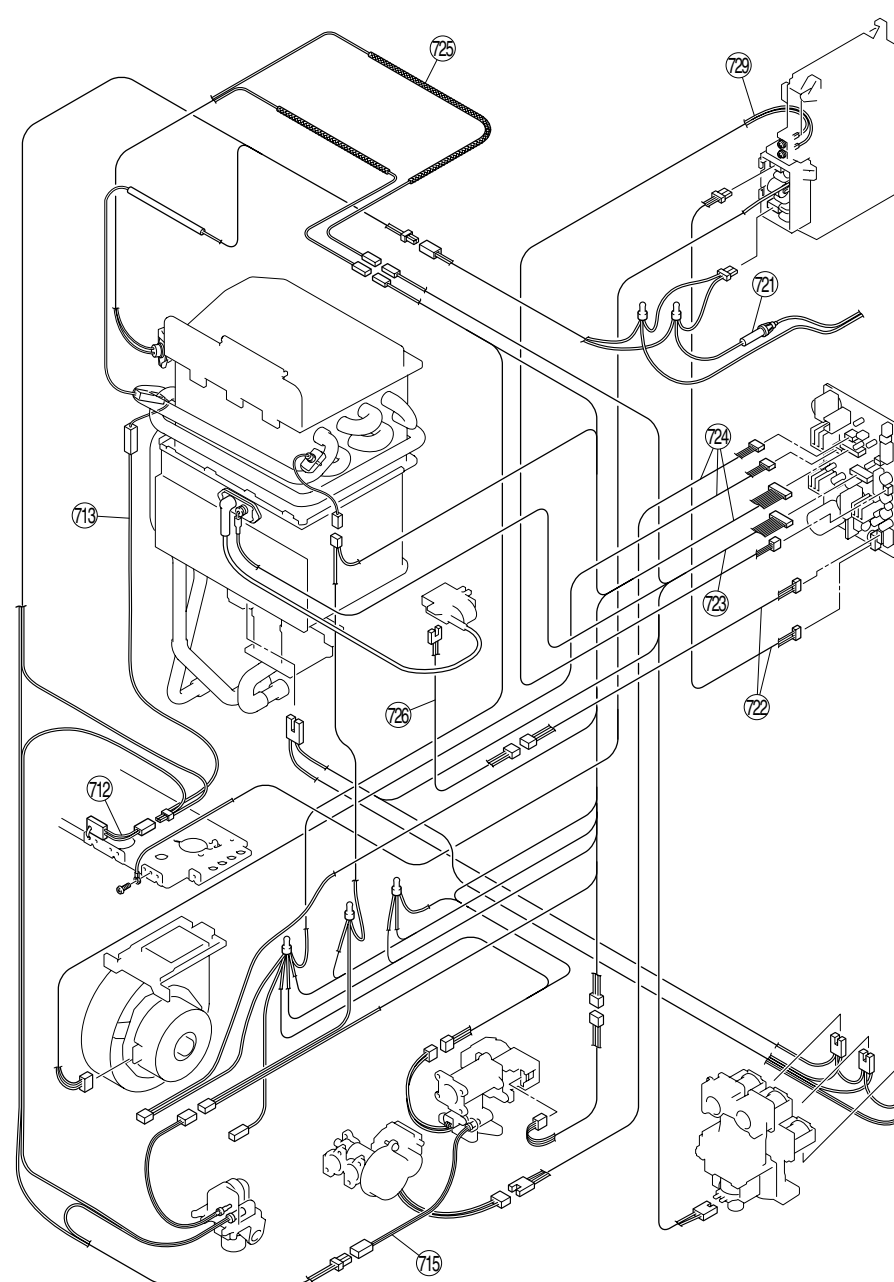
**EXPLODED VIEW - INTERNALS**



**EXPLODED VIEW - INTERNALS**



**EXPLODED VIEW - ELECTRICAL**



**PARTS LIST**

Number	Description	Parts Number	Quantity		Number	Description	Parts Number	Quantity		Number	Description	Parts Number	Quantity	
			505	305				505	305				505	305
001	Main Body (W)	701022-005	1	1	143	Heat Exchanger Assembly	701022-061	1	-	718	Antifrost Heater Clip C	701022-105	1	1
002	Wall Mounting Bracket (W)	701022-007	2	2	143	Heat Exchanger Assembly	701022-062	-	1	721	Fuse Harness (W)	701022-109	1	1
003	Rubber Bushing	701022-008	1	1	400	Water Inlet (3/4" NPT)	701022-070	1	1	722	Power Harness	701022-110	1	1
004	Connection Reinforcement Panel	701022-009	1	1	401	Water Flow Servo & Sensor Assembly	701022-071	1	-	723	Solenoid Valve Harness	701022-111	1	1
005	Heat Protection Plate	701022-010	1	1	401	Water Flow Servo & Sensor Assembly	701022-072	-	1	724	Sensor Harness	701022-114	1	-
006	Front Panel	701022-012	1	1	402	Rectifier	701022-073	1	1	724	Sensor Harness	701022-115	-	1
007	Front Panel Packing	701022-013	1	1	403	By-pass Servo Assembly	701022-074	1	-	725	Thermal Fuse Harness Assy	701022-116	1	1
008	Front Panel Packing Side	701022-014	2	2	404	Stop Bracket	701022-075	2	-	726	Ignitor Harness	701022-117	1	1
011	Screw Cover	701022-017	2	2	404	Stop Bracket	701022-076	-	1	727	Flow Sensor	701022-118	1	1
012	Screw Cover Lid	701022-018	4	4	405	Plug Band	701022-077	1	1	729	Remote Controller Harness	701022-119	1	1
013	Cable Access Assy	701022-019	1	1	408	Hot Water Outlet (3/4" NPT)	701022-078	1	1	730	Thermistor	701022-120	1	1
014	Rubber Bushing	701022-021	1	1	409	Stop Bracket	701022-079	1	1	801	Screw	701022-122	4	4
015	Rain Hood	701022-022	1	1	410	Plug Band (small)	701022-080	1	1	802	Resin Washer	701022-123	4	4
016	Packing	701022-023	1	1	411	Drain Valve	701022-081	1	1	803	O-ring	701022-124	3	3
017	Screw Cover Assy	701022-024	2	2	412	Water Filter Assy	701022-082	1	1	804	Thermistor Stop Screw	701022-125	1	1
100	Gas Control Assembly	701022-025	1	1	413	Cover	701022-083	1	1	805	Screw	701022-126	3	2
101	Test Port Set Screw	701022-026	2	2	700	PCB	701022-281	1	-	806	Screw	701022-127	2	2
102	Gas Connection (3/4" NPT)	701022-027	1	1	700	PCB	701022-280	-	1	807	Resin Washer	701022-128	2	2
103	Burner Unit Assy (LPG)	701022-028	1	1	701	Surge Protector	701022-086	1	1	808	Screw	701022-129	4	4
103	Burner Unit Assy (NG)	701022-029	1	1	701	Surge Protector with terminal (optional)	701022-087	1	1	810	O-ring	701022-130	2	2
110	Manifold Assembly (LPG)	701022-031	1	1	702	PCB cover - side	701022-089	1	1	812	O-ring	701022-132	1	1
110	Manifold Assembly (W-NG)	701022-033	1	1	703	PCB cover - front	701022-090	1	1	813	O-ring	701022-133	2	1
113	Pressure Point Sealing Screw	701022-034	1	1	706	Ignitor	701022-091	1	1	814	O-ring	701022-134	2	2
114	Combustion Chamber Sightglass Plate	701022-035	1	1	707	High Tension Cord	701022-092	1	1	815	O-ring	701022-135	2	1
116	Electrode	701022-036	1	1	708	Electrode Sleeve	701022-093	1	1	816	O-ring	701022-136	1	1
117	Flame Rod	701022-037	1	1	709	Thermistor - Heat Exchanger	701022-094	1	1	817	O-ring	701022-137	1	1
118	Electrode Packing	701022-038	1	1	710	Thermistor Clip Large	701022-095	1	1	818	Packing	701022-138	2	2
119	Electrode Holder	701022-039	1	1	711	Temperature Fuse Clip	701022-096	5	5	819	Screw	701022-139	2	2
125	Fan Assembly	701022-044	1	1	712	Frost Sensing Switch	701022-097	1	1	820	Screw	701022-140	4	4
132	Combustion Chamber Fan Bracket	701022-047	1	1	713	Anti Frost Heater (120V)	701022-099	1	1	821	Screw	701022-141	2	2
135	Flue Outlet	701022-049	1	1	715	Valve Heater (120V) Assembly	701022-100	1	1	822	Screw	701022-142	3	3
137	Flue Outlet Gasket	701022-052	1	1	716	Antifrost Heater Clip B	701022-102	2	2	888	Manual	315898-000	1	1
138	Seal Packing	701022-054	1	1	717	Antifrost Heater Clip A	701022-103	1	1	889	Tech Sheet	315896-000	1	1