

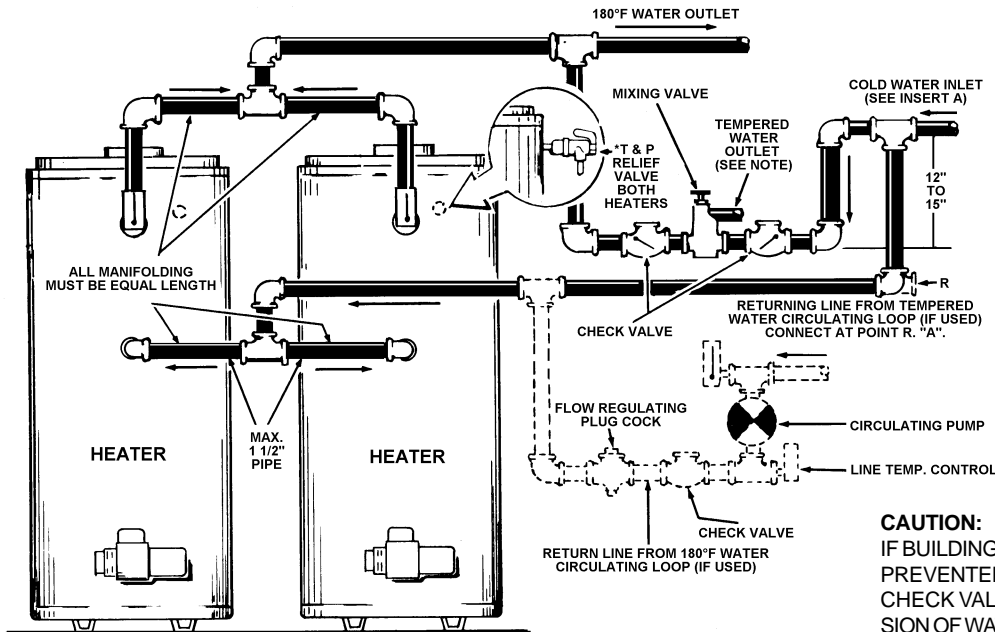
A. O. SMITH

APPLICATION TYPE DIAGRAM
SEE INSTALLATION MANUAL
FOR COMPLETE INSTRUCTIONS

INSTALL IN ACCORDANCE WITH LOCAL CODES.

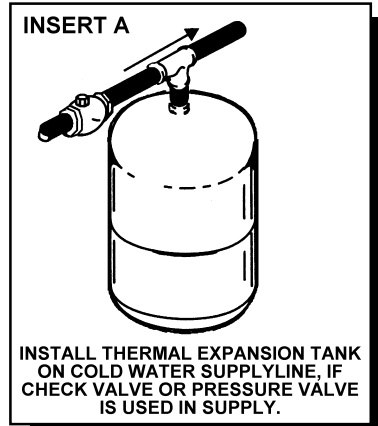
**ONE OR TWO TEMPERATURE
TWO HEATERS
WITH OR W/O MIXING VALVE
TWO PREHEATERS WITH BOOSTER
HEATER WITH OR W/O BUILDING
RECIRCULATION**

OIL FIRED TANK TYPE COF-199 THRU 700



MUST BE IDENTICAL HEATERS

TWO HEATERS WITH OR WITHOUT MIXING VALVE

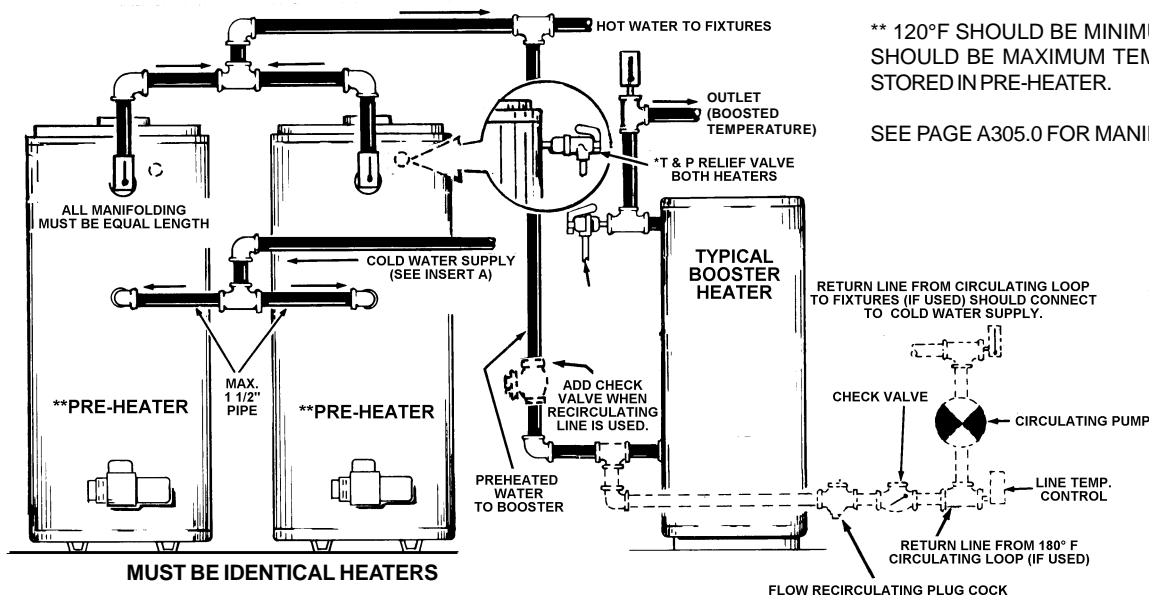


CAUTION:
IF BUILDING COLD WATER SUPPLY HAS A BACKFLOW PREVENTER, CHECK VALVE OR WATER METER WITH CHECK VALVE, PROVISIONS FOR THERMAL EXPANSION OF WATER IN THE HOT WATER SYSTEM MUST BE PROVIDED.

* PIPE RELIEF VALVE TO OPEN DRAIN.

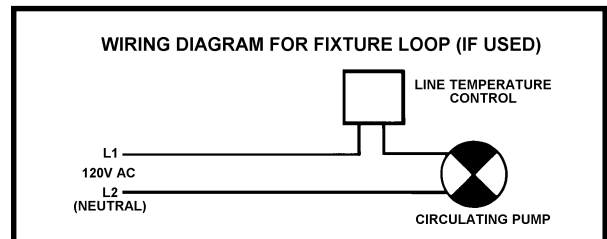
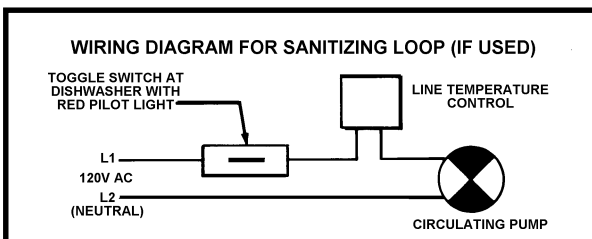
** 120°F SHOULD BE MINIMUM AND 140°F TO 150°F SHOULD BE MAXIMUM TEMPERATURE OF WATER STORED IN PRE-HEATER.

SEE PAGE A305.0 FOR MANIFOLD KITS.



MUST BE IDENTICAL HEATERS

TWO PRE-HEATERS WITH BOOSTER HEATER



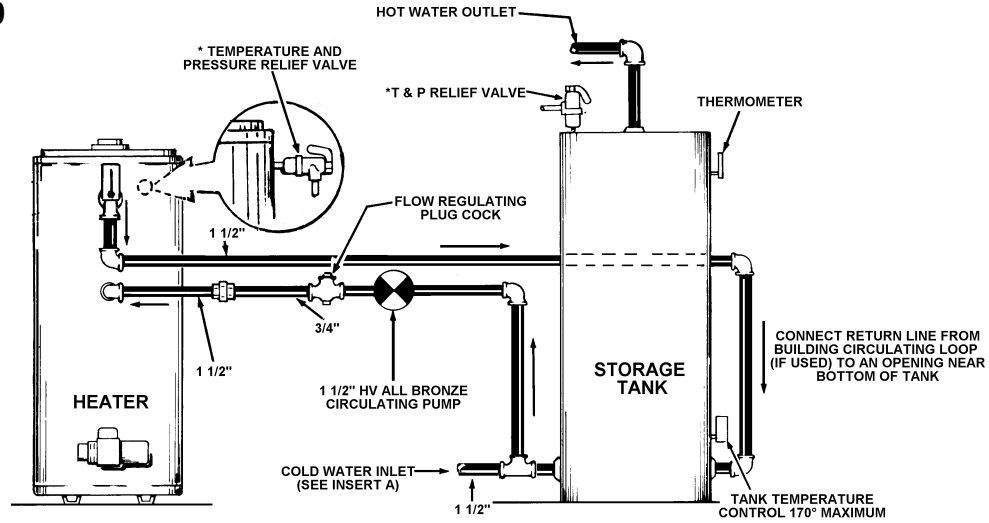
**MEDIUM TEMPERATURE
ONE HEATER WITH
AUXILIARY STORAGE TANK
FORCED CIRCULATION WITH
OR W/O BUILDING RECIRCULATION**

A. O. SMITH

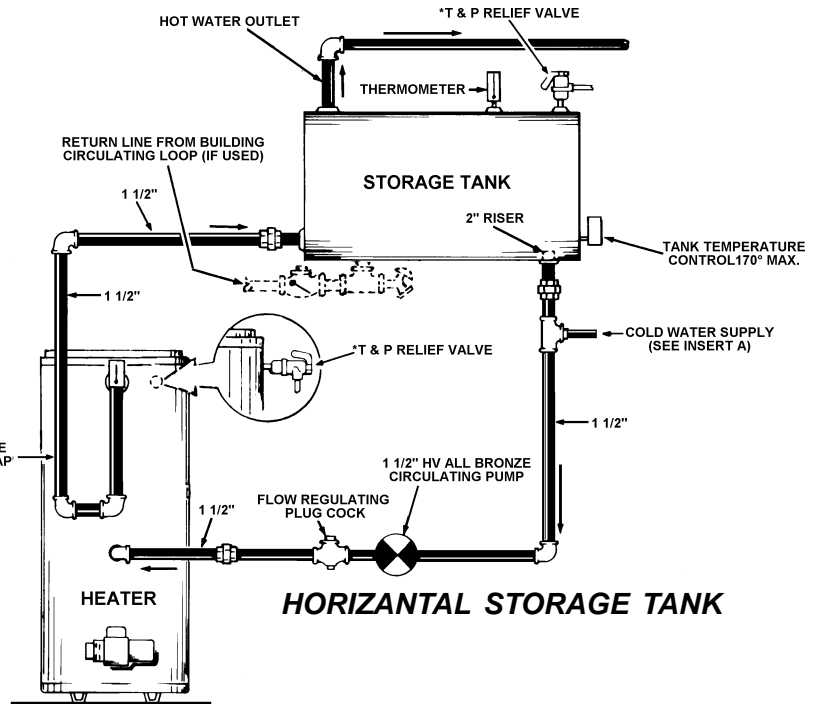
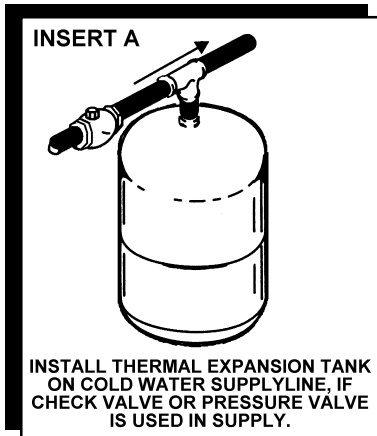
APPLICATION TYPE DIAGRAM
SEE INSTALLATION MANUAL
FOR COMPLETE INSTRUCTIONS

INSTALL IN ACCORDANCE WITH LOCAL CODES.

**OIL FIRED TANK TYPE
COF-199 THRU 700**



VERTICAL STORAGE TANK



HORIZONTAL STORAGE TANK

CAUTION:
IF BUILDING COLD WATER SUPPLY HAS A BACKFLOW PREVENTER, CHECK VALVE OR WATER METER WITH CHECK VALVE, PROVISIONS FOR THERMAL EXPANSION OF WATER IN THE HOT WATER SYSTEM MUST BE PROVIDED.

* PIPE RELIEF VALVE TO OPEN DRAIN.

HEATER THERMOSTATS SHOULD BE SET AT LEAST 5° HIGHER THAN TANK TEMPERATURE CONTROL.

