

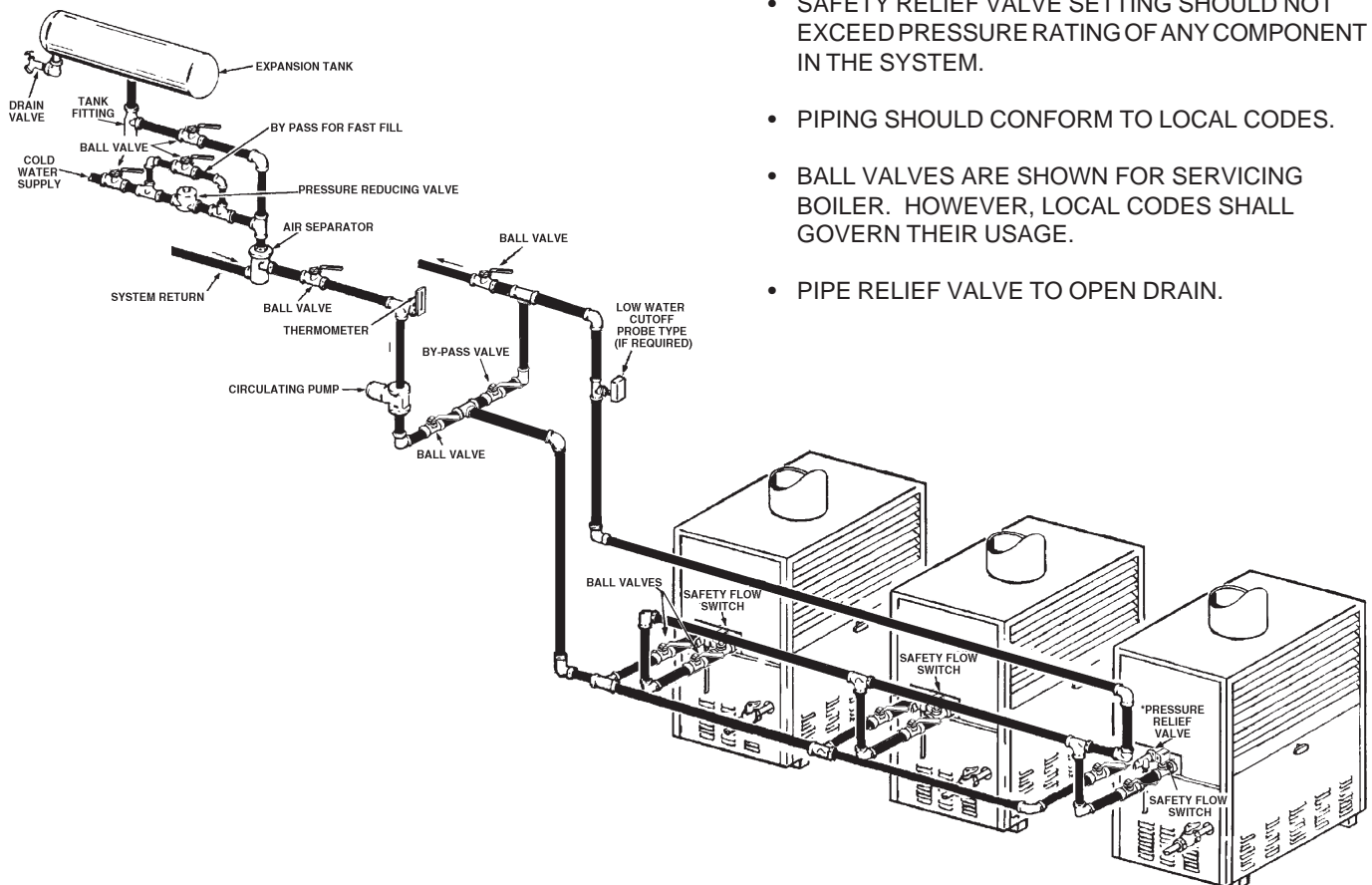
A. O. SMITH

APPLICATION TYPE DIAGRAM
SEE INSTALLATION MANUAL FOR
COMPLETE INSTRUCTIONS

INSTALL IN ACCORDANCE WITH LOCAL CODES.



THREE BOILERS REVERSE RETURN DB-720 THRU DB-1810



- SAFETY RELIEF VALVE SETTING SHOULD NOT EXCEED PRESSURE RATING OF ANY COMPONENT IN THE SYSTEM.
- PIPING SHOULD CONFORM TO LOCAL CODES.
- BALL VALVES ARE SHOWN FOR SERVICING BOILER. HOWEVER, LOCAL CODES SHALL GOVERN THEIR USAGE.
- PIPE RELIEF VALVE TO OPEN DRAIN.

| Model DB | Temp. Rise 20°(F) | | Temp. Rise 30°(F) | | Temp. Rise 40°(F) | | Boiler Inlet & Outlet (Inches) |
|----------|-------------------|------------------|-------------------|------------------|-------------------|------------------|--------------------------------|
| | Flow (gpm) | Head Loss (feet) | Flow (gpm) | Head Loss (feet) | Flow (gpm) | Head Loss (feet) | |
| 720 | 59 | 3.5 | 40 | 1.7 | 30 | 1.0 | 2" |
| 840 | 69 | 4.8 | 46 | 2.1 | 35 | 1.5 | 2" |
| 960 | 79 | 6.8 | 53 | 3.3 | 40 | 1.9 | 2" |
| 1080 | 89 | 4.5 | 59 | 2.1 | 45 | 1.4 | 2.5" |
| 1210 | 100 | 5.3 | 67 | 2.7 | 50 | 1.6 | 2.5" |
| 1350 | 111 | 6.8 | 74 | 3.2 | 56 | 1.8 | 2.5" |
| 1480 | 122 | 7.9 | 81 | 3.9 | 61 | 2.1 | 2.5" |
| 1610 | 133 | 9.5 | 89 | 5.0 | 66 | 3.0 | 2.5" |
| 1810 | 149 | 12.0 | 100 | 6.2 | 75 | 3.9 | 2.5" |

SYSTEM NOTES:

The System Pump must be sized to maintain the minimum recommended flow rate through the boilers. The pump must operate continuous or cycle with the boilers.

The By-Pass is required for systems designed to operate at flow rates exceeding the maximum recommended flow rates of the boilers.

This piping method is not recommended for systems designed to operate with return water temperatures less than 110°F. For Low Temperature Heating Systems, see A&E page # E 112.0 for the recommended piping method.

