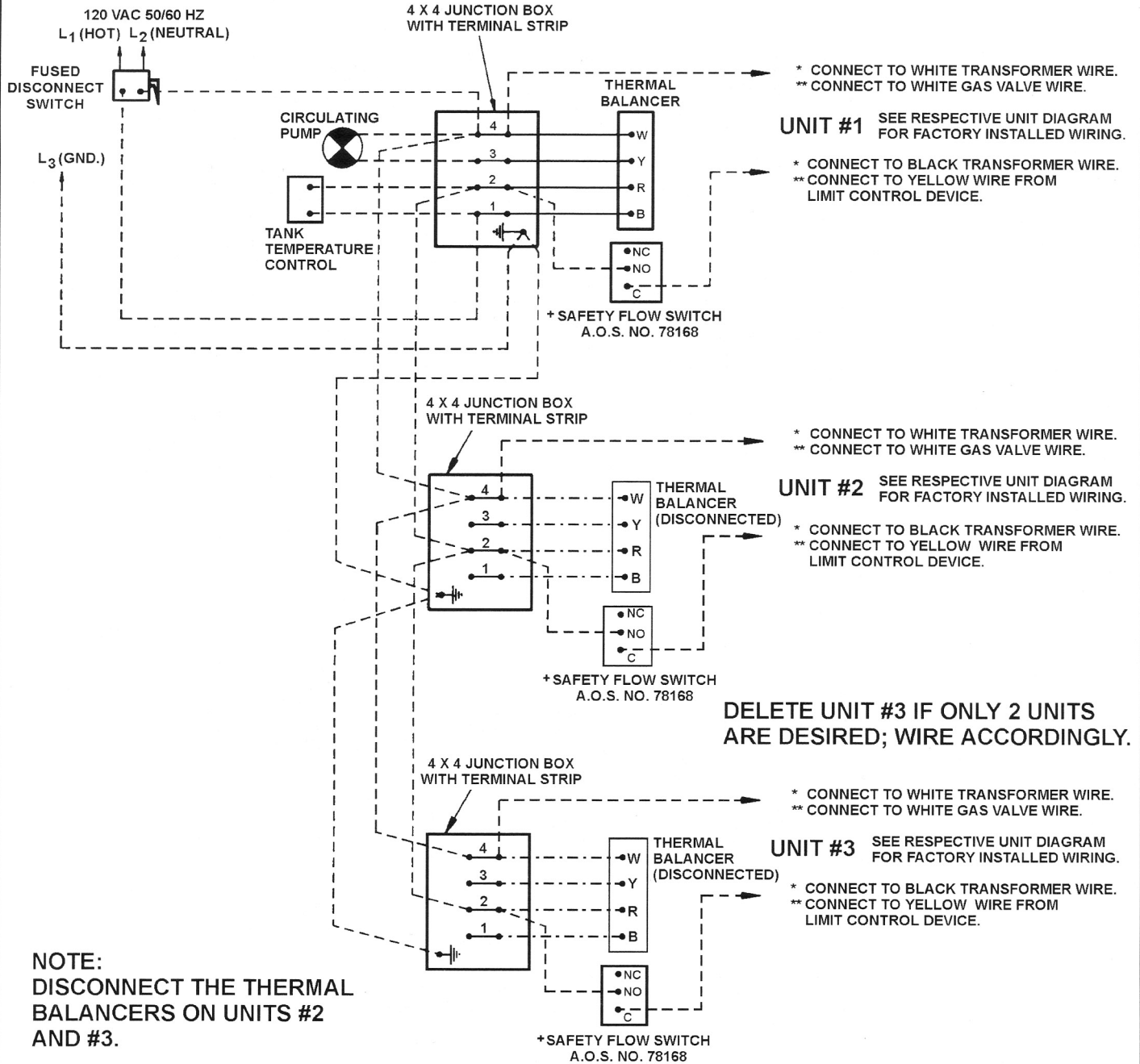


A.O. SMITH

CER-TEMP 80 WIRING DIAGRAM FOR HW-200M THRU HW-670 WITH OR WITHOUT IID SYSTEM (SINGLE CIRCULATOR SYSTEM)



NOTE:
DISCONNECT THE THERMAL
BALANCERS ON UNITS #2
AND #3.

+FLOW CLOSSES CIRCUIT.

WIRING

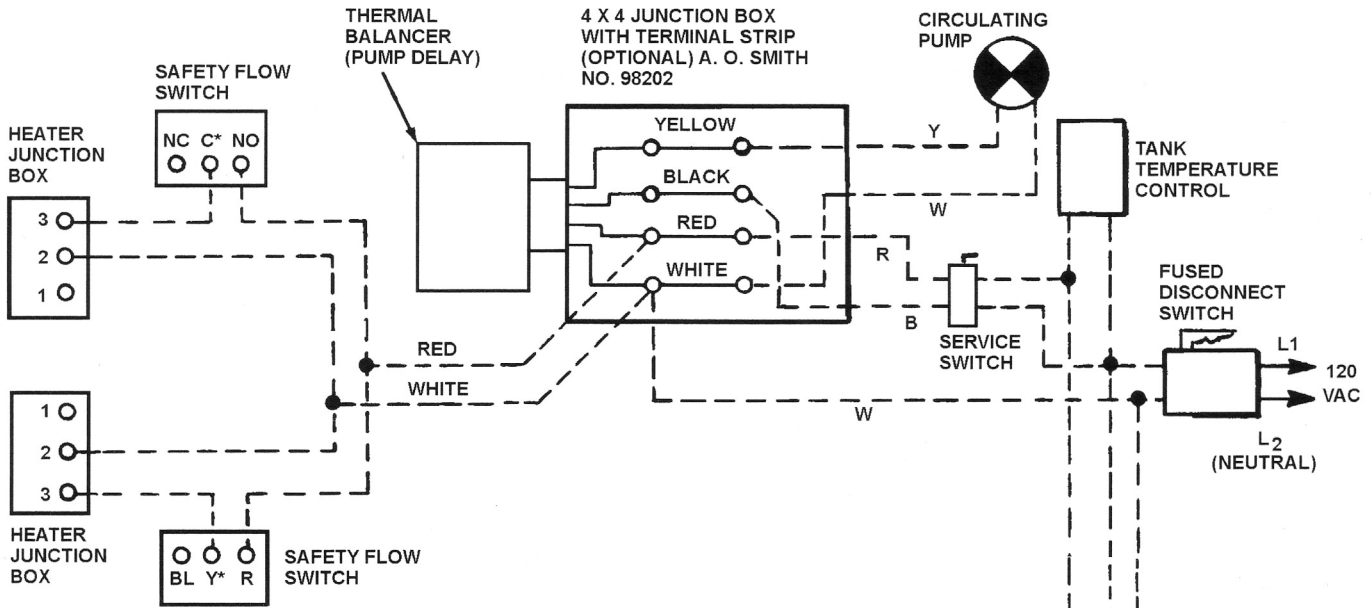
- BY FACTORY
- - - - BY INSTALLER
- · - · - DISCONNECT BY INSTALLER
- * I.I.D. UNITS
- ** STANDING PILOT UNITS

CONNECTION DIAGRAM

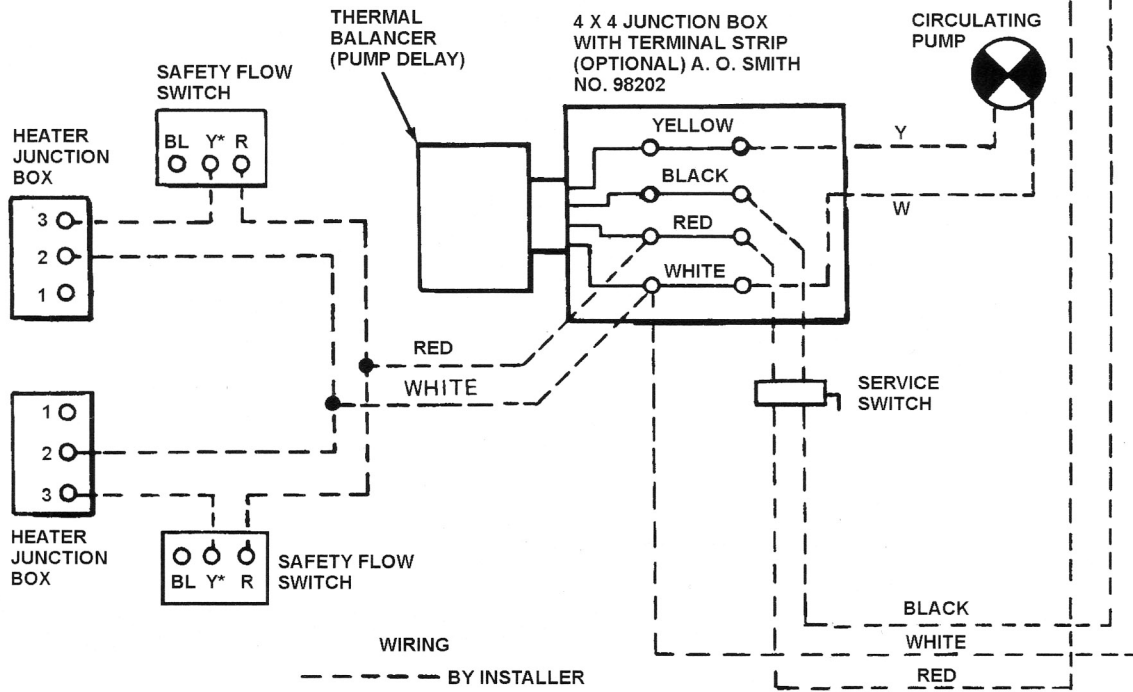
NOTE: IF ANY OF THE ORIGINAL WIRE, AS SUPPLIED WITH THE APPLIANCE, MUST BE REPLACED, IT MUST BE REPLACED WITH TYPE 105°C WIRE OR ITS EQUIVALENT, EXCEPT FOR THE FLAME SENSOR AND IGNITION CABLE (I.I.D. UNITS ONLY) WHICH ARE 250°C AND WIRES CONNECTED TO THE COIL PROTECTOR WHICH ARE 200°C.

CER-TEMP 80 WIRING DIAGRAM
FOR HW-670
WITH IID SYSTEM

A. O. SMITH



* TERMINAL RED AND YELLOW, FLOW CLOSES CIRCUIT



WIRING BY INSTALLER