

ProMax® SL

STANDARD VENT

PROMAX® SL STANDARD VENT FEATURES

- **SIDE-MOUNTED RECIRCULATING TAPS**
For installation with combination space heating/potable water heating applications (such as ProMax XL, Heat Exchanger) or any system requiring a recirculating hot water loop.
- **A. O. SMITH DYNACLEAN™ DIFFUSER DIP TUBE**
Helps reduce lime and sediment buildup, maximizes hot water output. Made from long-lasting PEX cross-linked polymer.
- **GREEN CHOICE® GAS BURNER**
Patented "Eco-Friendly" design reduces NOx emissions by up to 33% and meets the low NOx requirements of less than 40 ng/j.
- **COREGARD™ ANODE RODS**
A. O. Smith's exclusive aluminum anodes have a stainless steel core, protect tank against corrosion longer versus ordinary mild steel anodes.
- **PUSH-BUTTON PIEZO IGNITOR**
Makes lighting pilot fast and easy with one-hand push-button spark ignition. Standard on all FVIR Compliant models.
- **HEAT TRAP NIPPLES**
Standard on all models except 74 gallon models.
- **DURABLE TAMPER-RESISTANT BRASS DRAIN VALVE**
- **THICK "ENVIRONMENTALLY-FRIENDLY" NON-CFC FOAM INSULATION**
Improves efficiency.
- **BLUE DIAMOND® GLASS COATING**
Provides superior corrosion resistance compared to industry-standard glass lining.
- **CSA CERTIFIED AND ASME RATED T&P RELIEF VALVE**
Top-mounted T&P relief valve available as option on 40, 50 and 65-gallon models.
- **FVIR COMPLIANT**
See other side.
- **CODE COMPLIANCE: UBC, CEC, SBCC, CABO, HUD, BOCA NATIONAL CODES, CURRENT EDITION OF ASHRAE/IESNA 90.1 AND 2004 NAECA**
- **DESIGN-CERTIFIED BY CSA INTERNATIONAL**
According to ANSI Z21.10.1 CSA Standards governing storage-type water heaters.
- **6-YEAR LIMITED TANK AND PARTS WARRANTY**
For complete information, consult written warranty or A. O. Smith Water Products Company.

SERIES 100/101



ProMax® SL

STANDARD VENT

MODEL NUMBER	SERIES	FIRST HOUR RATING GALLONS	ENERGY FACTOR	GALLON CAPACITY	BTU INPUT PER HOUR NATURAL†	BTU OUTPUT PER HOUR NATURAL	RECOVERY 90°F RISE GALLONS PER HOUR	R VALUE	DIMENSIONS IN INCHES								APPROXIMATE SHIPPING WEIGHT (LBS.)	
									A	B	C	D	E	F	G	H		DRAFT HOOD OUTLET
GCVH-40L	200	70	.59	40	40,000	30,400	41	8	61-3/4	58-1/4	18	13	8	51-3/4	14-1/4	51-3/4	3 or 4	138
GCVT-40L	200	75	.60	40	50,000	35,000	51	16	61-3/4	58-1/4	20	13-1/4	16	51-3/4	14-1/4	51-3/4	4	140
GCVT-50L	100	90	.58	48	50,000	38,000	51	8	60-7/8	56-1/2	20	13-1/2	8	50-1/4	14-1/2	50-1/4	4	172
GCVX-50L	100	93	.58	50	65,000	50,100	67	16	63-7/8	59-1/2	22	15-1/2	8	54	14-1/2	54	4	195
GCV-65L	100	116	.57	65	65,000	50,050	67	16	65	60	24	15-1/2	8	54-1/4	14-1/4	54-1/4	4	215
FCG-75L*	300	N/A	N/A	74	75,100	60,000	81	16	61	57	26 1/2	14-3/4	16	50-1/4	15-1/2	50-1/4	4	275

Recovery capacity based on actual performance tests.

* Not FVIR Compliant.

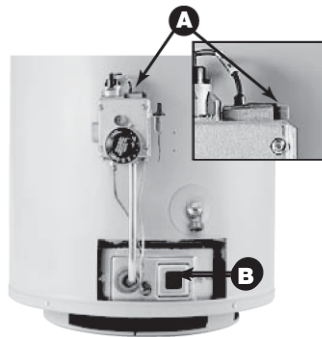
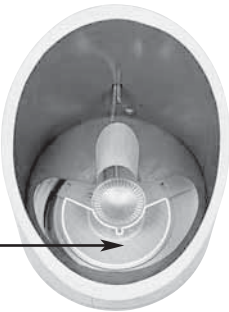
Water Connections – 1" on 74-gallon model, 3/4" on all other models.

† Propane Gas – GCVH-40L: 36,000 BTU; GCVT-40L: 45,000 BTU; GCVT-50L: 47,000 BTU; GCVX-50L: 55,000 BTU; GCV-65L: 62,500 BTU; FCG-75L: 75,100 BTU

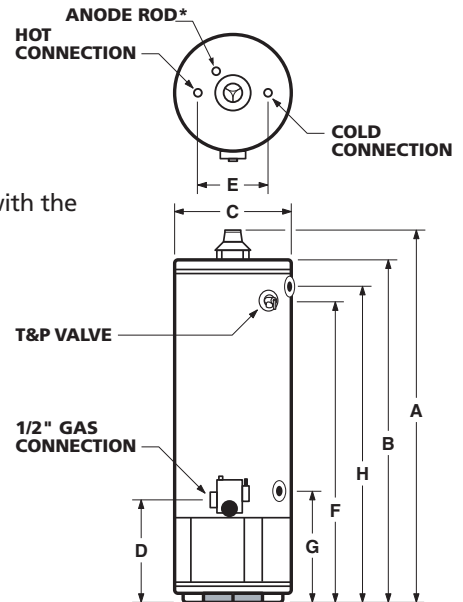
Corderite Combustion Containment (C3) design meets American National Standards Institute standards (ANSI Z21.10.1.-4.1 CSA Standards) that deal with the accidental or unintended ignition of flammable vapors, such as those emitted by gasoline.

Covered by four U.S. patents, FVIR Compliant gas water heaters feature a sealed combustion chamber with air intake screen and a fireproof Corderite flame arrestor built into the water heater base. In addition, a thermal cutoff (TCO) device, integral with the thermocouple, is designed to shut off gas flow to the burner and pilot if poor combustion is detected.

If flammable vapors accidentally enter the combustion chamber, the Corderite flame arrestor is designed so flames burn off the top surface and cannot escape down through the arrestor.



A. Easy-to-light piezo ignitor **B.** View port for easy burner inspection



*Location for optional top-mounted T&P Valve if ordered from factory.

Maximum hydrostatic working pressure: 150 psi