

POWER BURNER LIGHT DUTY - BTP

POWERED BURNER MODELS LIGHT-DUTY COMMERCIAL GAS WATER HEATERS

These BTP models are equipped with powered gas, non-forced-draft burners requiring a negative draft. With 81 gallon storage capacities and inputs from 270,000 to 370,000 BTUs, they are suitable for commercial applications. A. O. Smith provides a FREE professional start-up that is required on the BTP models.

POWERED GAS BURNER

- Electronic flame safeguard control with direct spark ignition.
- Redundant gas valves for added safety.
- Power gas burner requires 120V, 60Hz service.
- Non-forced-draft burner; negative draft required in vent piping.

FULLY AUTOMATIC CONTROLS WITH SAFETY SHUTOFF

- High temperature limit control (manual reset).
- Dual thermostats for accurate temperature control 120°F - 180°F

PERMAGLAS® ULTRA COAT™ GLASSLINING

- Exclusive process provides superior protection against corrosion.
- CoreGard™ anode rods with stainless steel core provide additional corrosion protection.

BAROMETRIC DRAFT DAMPER

- Ensures proper draft for maximum efficiency.

HANDHOLE CLEANOUT

- Allows easy access to tank for interior cleaning.

CSA CERTIFIED AND ASME RATED T&P RELIEF VALVE

80% THERMAL EFFICIENCY

MAXIMUM HYDROSTATIC WORKING PRESSURE: 160 PSI

FACTORY START-UP INCLUDED

- Required for activating warranty and ensuring maximum performance. Contact your local sales representative or Authorized Start-Up Agent to arrange a FREE Certified Start-Up.

FLAME INSPECTION PORT OPENING

MOUNTED ON RUGGED CHANNEL IRON SKIDS

MUST BE INSTALLED ON NON-COMBUSTIBLE SURFACE

CODES AND STANDARDS

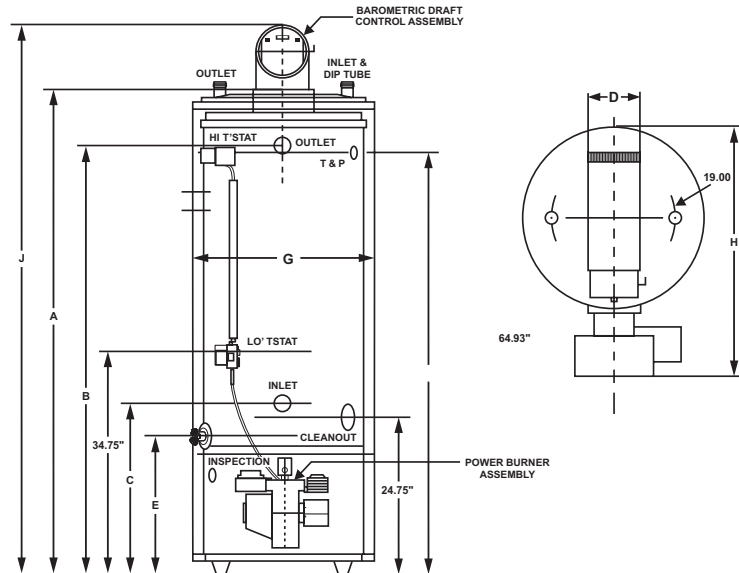
- Design-certified by UL (Underwriters Laboratories), according to ANSZ21. 10.3-CSA4.3 standards governing storage-type water heaters
- Meets or exceeds the Thermal Efficiency and/or Standby Loss Requirements of the U.S. Department of Energy and Current Edition of the ASHRAE/IES 90.1.

3-YEAR LIMITED TANK / 1-YEAR LIMITED PARTS WARRANTY

- For complete warranty information, consult written warranty or contact A. O. Smith.



ROUGH IN DIMENSIONS - Models BTP-270(A) Thru BTP-370(A)



Dimensions

Model Number	Inches or CM	Dimensions in Inches									Approx. Shipping Weight		Inlet	Outlet
		A	B	C	D	E	G	H	J	Gas	Standard	ASME		
BTP-270(A)	Inches	74-3/4	65	26-3/4	6	21-3/8	27-3/4	38	85-1/4	1/2	547 lbs	632 lbs	1-1/2	1-1/2
	CM	189.9	165.1	67.9	15.2	54.3	68.9	96.5	216.5	1.3	248.6 kg	287.3 kg	3.8	3.8
BTP-370(A)	Inches	74-3/4	65	26-3/4	6	21-3/8	27-3/4	38	85-1/4	1/2	547 lbs	632 lbs	1-1/2	1-1/2
	CM	189.9	165.1	67.9	15.2	54.3	68.9	96.5	216.5	1.3	248.6 kg	287.3 kg	3.8	3.8

Dimensions and specifications subject to change without notice in accordance with our policy of continuous product improvement.
 * BTP 370(A) is available in Natural Gas only.

Recovery Capacity

Model Number	BTU Input Per Hour	Gallons/Litres	Tank Size	GPH or LPH	Recovery Gallons Per Hour Temperature Rise			Maximum Amperes 120V, 60 Hz, 1
					40°	100°	140°	
					20°	56°	78°	
BTP-270(A)	270,000	U.S. Gallons	81	GPH	0	262	187	5
		Litres	306.6	LPH	0.0	991	707.8	
BTP-370(A)	370,000	U.S. Gallons	81	GPH	0	359	256	5
		Litres	306.6	LPH	0.0	1358	970	

SPECIFICATION

(Natural or Propane) gas water heater(s) shall be A. O. Smith model BTP _____ with a storage capacity of 81 gallons, an input rating of ___ BTUs per hour, a recovery capacity of ___ GPH at 100°F temperature rise and a maximum hydrostatic working pressure of 160 PSI. Heater(s) shall meet the thermal efficiency and/ or standby loss requirements of the U.S. Department of Energy and current edition of ASHRAE/IES 90.1. Water heater(s) shall have glass-lined tank, protected against electrolytic corrosion by multiple factory-installed anode rods. Other standard equipment shall include: 1) Powered gas burner, electronic ignition, automatic pilot gas valves, gas pressure regulator, and flame inspection port; 2) Handhole cleanout; 3) High temperature limit control; 4) Dual thermostat for accurate temperature control; 5) CSA Certified and ASME rated T&P relief valve.

Controls shall include a Fenwal OSI to provide direct spark ignition and flame monitoring. A prepurge of 30 seconds minimum shall be provided. A trial for ignition period of 5 seconds, after which if the flame is not proved or lost during the running cycle, the system will lock out.

Heater(s) tank shall have a 3-year (or extended to 5-year limited) warranty against corrosion as outlined in the warranty.

For technical information, call 800-527-1953. A. O. Smith Corporation reserves the right to make product changes or improvements without prior notice.