

## ProMax<sup>®</sup> SL STANDARD VENT

### FEATURES

#### SIDE-MOUNTED RECIRCULATING TAPS

For installation with combination space heating/potable water heating applications (such as ProMax XL, Heat Exchanger) or any system requiring a recirculating hot water loop.

#### DYNACLEAN™ II AUTOMATIC SEDIMENT-CLEANING SYSTEM

Specially designed dip tube directs incoming cold water to create turbulence in the tank, to reduce lime and sediment buildup. DynaClean™ II helps maximize tank life, maintain high energy-efficiency and increases hot water output. Made from long-lasting PEX cross-linked polymer.

#### GREEN CHOICE<sup>®</sup> GAS BURNER

Patented "Eco-Friendly" design reduces NOx emissions by up to 33%, and meets less than 40 ng/j requirement for low NOx emissions.

#### COREGARD™ ANODE RODS

A. O. Smith's exclusive aluminum anodes have a stainless steel core, protects tank against corrosion longer versus ordinary mild steel anodes.

#### PUSH-BUTTON PIEZO IGNITOR

Makes lighting pilot fast and easy with one-hand push-button spark ignition. Standard on C3 Technology™ models.

#### HEAT TRAP NIPPLES

Standard on all models.

#### DURABLE TAMPER-RESISTANT BRASS DRAIN VALVE

#### THICK CFC-FREE FOAM INSULATION

Improves efficiency.

#### BLUE DIAMOND<sup>®</sup> GLASS COATING

Provides superior corrosion resistance compared to industry-standard glass lining.

#### CSA CERTIFIED AND ASME RATED T&P RELIEF VALVE

Top-mounted T&P relief valve available as an option.

#### FVIR COMPLIANT

See other side.

#### CODE COMPLIANCE

UBC, CEC, SBCC, CABO, HUD, BOCA National Codes. Meets or exceeds the thermal efficiency and standby loss requirements of the U.S. Department of Energy and current edition of ASHRAE/IESNA 90.1. Meets or exceeds the Federal Energy Efficiency Standards effective January 20, 2004, according to the National Appliance Energy Conservation Act (NAECA) of 1992.

#### DESIGN-CERTIFIED BY CSA INTERNATIONAL

According to ANSI Z21.10.1 - CSA 4.1 Standards governing storage-type water heaters.

#### 10-YEAR LIMITED TANK AND PARTS WARRANTY

For complete information, consult written warranty or A. O. Smith Water Products Company.

## 200/201 Series



## ProMax<sup>®</sup> SL STANDARD VENT

MODEL NUMBER	FIRST HOUR RATING GALLONS	ENERGY FACTOR	GALLON CAPACITY	BTU INPUT PER HOUR NATURAL†	BTU OUTPUT PER HOUR NATURAL	RECOVERY 90°F RISE GALLONS PER HOUR	R VALUE	DIMENSIONS IN INCHES								DRAFT HOOD OUTLET	APPROXIMATE SHIPPING WEIGHT (LBS)
								A	B	C	D	E	F	G	H		
<b>10-YEAR LIMITED TANK AND PARTS WARRANTY</b>																	
XGV-40L	70	.63	40	40,000	30,400	41	16	61-3/4	58-1/4	20	13	8	51-3/4	14-1/4	51-3/4	3 or 4	150
XGV-50L	88	.62	50	40,000	30,400	41	16	61	57-1/4	22	13	8	50-1/2	14-1/4	50-1/2	3 or 4	165

Recovery capacity based on actual performance tests.

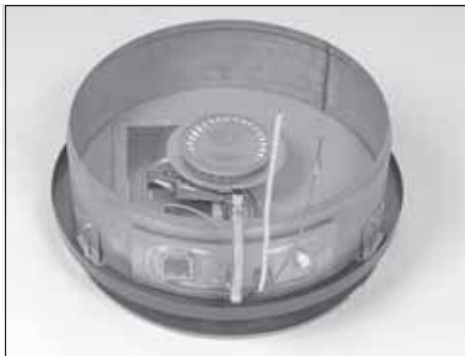
† Propane Gas – XGV-40L: 36,000 BTU; XGV-50L: 37,000 BTU

Models are ENERGY STAR<sup>®</sup> qualified.

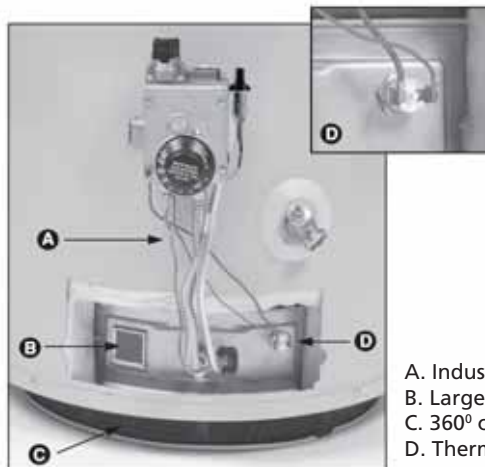
### Flammable Vapor Ignition Resistant Water Heaters

A. O. Smith FVIR design meets or exceeds the American National Standards Institute standards (ANSI Z21.10.1 - CSA 4.1 Standards) that deal with the accidental or unintended ignition of flammable vapors, such as those emitted by gasoline.

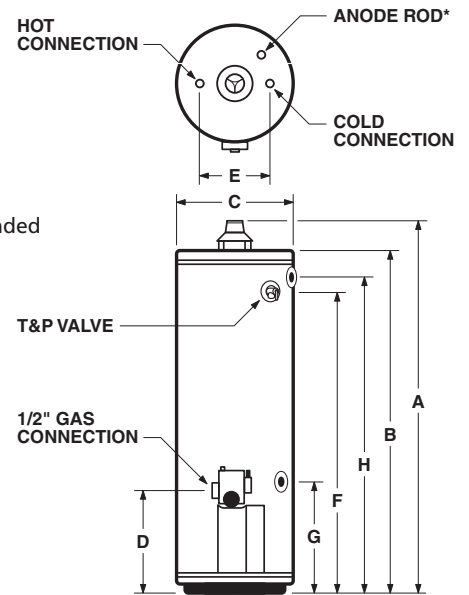
Feature a sealed combustion chamber with air intake filter and a flame arrestor built into the water heater base. In addition, a thermal cutoff (TCO) device, is designed to shut off gas flow to the burner and pilot if poor combustion is detected.



If flammable vapors accidentally enter the combustion chamber, the arrestor is designed so flames burn off the top surface and can not escape down through the arrestor.



- A. Industry standard thermocouple
- B. Large View Port for easy burner inspection
- C. 360° combustion air filter
- D. Thermal Cutoff (TCO) with manual reset



\*Location for optional top-mounted T&P Valve if ordered from factory.

Maximum hydrostatic working pressure: 150 psi