

ProMax® + PLUS HIGH RECOVERY

FEATURES

HIGHEST RECOVERIES AND FIRST HOUR RATINGS

Capacity/input combinations up to 98 gallons/75,100 BTUs produce recoveries up to 81 gallons per hour, with deliverable hot water up to 150 gallons.

DYNACLEAN™ DIFFUSER DIP TUBE

Helps reduce lime and sediment buildup, maximizes hot water output. Made from long-lasting PEX cross-linked polymer.

GREEN CHOICE® GAS BURNER

Patented "Eco-Friendly" design reduces NOx emissions by up to 33% and complies with less than 40 ng/j requirements for NOx emissions.

COREGARD™ ANODE ROD

A. O. Smith's exclusive aluminum anode has a stainless steel core, protects tank against corrosion longer versus ordinary anodes.

PUSH-BUTTON PIEZO IGNITOR

Makes lighting pilot fast and easy with one-hand push-button spark ignition. Standard on C3 Technology® models.

HEAT TRAP NIPPLES*

Factory-installed on most models.

DURABLE TAMPER-RESISTANT BRASS DRAIN VALVE

THICK CFC-FREE FOAM INSULATION

Improves efficiency.

PERMAGLAS® GLASS COATING

Protects steel tank from corrosion and maximizes tank life.

CSA CERTIFIED AND ASME RATED T&P RELIEF VALVE

Top-mounted T&P Relief Valve available as option on C3 Technology models.

CODE COMPLIANCE: UBC, CEC, SBCC, CABO, HUD, BOCA NATIONAL CODES, ASHRAE/IESNA 90.1 CURRENT EDITION AND 2004 NAECA STANDARDS

DESIGN-CERTIFIED BY CSA INTERNATIONAL

ANSI Z21.10.1 - 10.3 and CSA 4.1 - 4.3 Standards governing storage-type water heaters.

EQUIPPED WITH C3 TECHNOLOGY®

See other side.

6-YEAR LIMITED TANK AND PARTS WARRANTY

For complete information, consult written warranty or A. O. Smith Water Products Company.



Series 100/101



ProMax® + PLUS

HIGH RECOVERY

MODEL NUMBER	FIRST HOUR RATING (GPH)	GALLON CAPACITY	RECOVERY 90°F RISE PER HOUR	ENERGY FACTOR	BTU INPUT PER HOUR NATURAL†	R VALUE	DIMENSIONS (INCHES)						DRAFT HOOD OUTLET	APPROX. SHIPPING WEIGHT (LBS)
							A	B	C	D	E	F		
GCVT-40	88	38	48	0.60	50,000	16	58-1/2	54-3/4	20-1/2	13-3/8	8	48-7/8	4	138
GCVT-50	90	48	51	0.58	50,000	8	60-7/8	56-1/2	20	13-3/8	8	50-3/8	4	172
GCVX-50	93	50	67	0.58	65,000	16	63-7/8	59-1/2	22	15-1/2	8	54-1/8	4	195
GCV-65	116	65	67	0.57	65,000	16	65	60	24	15-1/2	8	54-1/4	4	215
FCG-75*	N/A	74	81	N/A	75,100	16	61	57	26-1/2	14-3/4	16	50-1/4	4	275
FCG-100*	N/A	98	81	N/A	75,100	10	68-1/2	65	27-3/4	15-3/16	16	57-3/8	4	350

Recovery capacity based on actual performance tests. Water Connections – 1" on 75-gallon model, 1-1/4" on 100-gallon model, 3/4" on all other models.

* Not equipped with C3 Technology. 75 and 100-gallon models have factory installed (non heat trap) nipples, 75-gallon model has 80% efficiency, 998 BTU/hr. standby loss; 100-gallon model has 80% efficiency, 1146 BTU/hr. standby loss.

† Propane Gas – GCVT-40: 47,000 BTU input; GCVT-50: 45,000 BTU input; GCVX-50: 55,000 BTU input; GCV-65: 62,500 BTU input.

For 10-Year Tank and 6-Year Parts Warranty, change "G" to "X" in Model Number (example: XCVT-40), or change "F" to "P" in model number (example: PCG-75). The standard FVIR models are certified for installations to 7700 feet elevation. For high altitude versions of the 75 & 100-gallon models add SMR "S19"

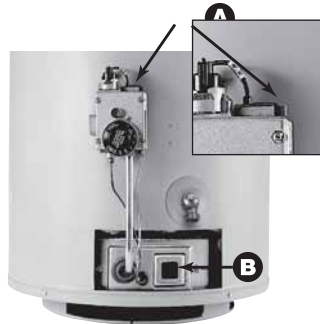
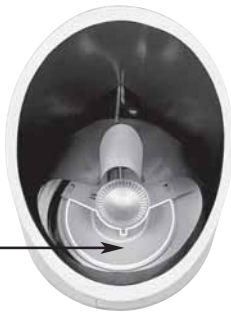


Flammable Vapor Ignition Resistant C3 Technology® Water Heaters

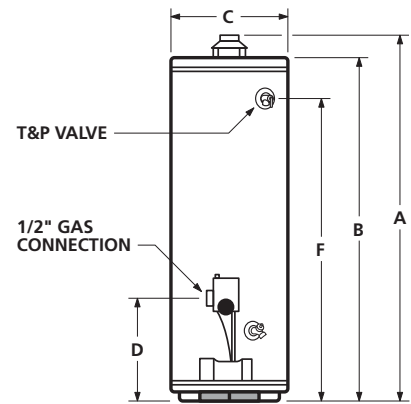
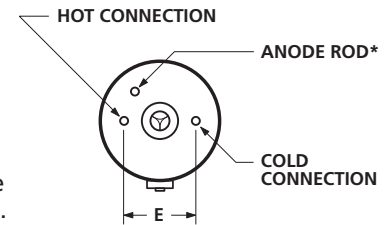
Corderite Combustion Containment (C3) design meets American National Standards Institute standards (ANSI Z10.1 - 10.3 CSA 4.1 - 4.3 Standards) that deal with the accidental or unintended ignition of flammable vapors, such as those emitted by gasoline.

Covered by four U.S. patents, C3 Technology gas water heaters feature a sealed combustion chamber with air intake screen and a fireproof Corderite flame arrestor built into the water heater base. In addition, a thermal cutoff (TCO) device, integral with the thermocouple, is designed to shut off gas flow to the burner and pilot if poor combustion is detected.

If flammable vapors accidentally enter the combustion chamber, the Corderite flame arrestor is designed so flames burn off the top surface and cannot escape down through the arrestor.



A. Easy-to-light piezo igniter
B. View port for easy burner inspection inside sealed combustion chamber



*Location for optional top-mounted T&P Valve if ordered from factory. (C3 models only)